

QUINTANA ROO

---RED FEDERAL LIBRE---

1	Francisco Escárcega - Chetumal	MEX-186-307
2	Mérida - Puerto Juárez	MEX-180
3	Muna - Felipe Carrillo Puerto	MEX-184
4	Ramal a Puerto Morelos	MEX
5	Ramal a Punta Piedra	MEX
6	Ramal a Subteniente López	MEX-186
7	Reforma Agraria - Puerto Juárez	MEX-307
8	T. C. (Reforma Agraria - Puerto Juárez) - Polyuc	MEX-293
9	Valladolid - Felipe Carrillo Puerto	MEX-295

---RED FEDERAL DE CUOTA---

10	El Cedral - Playa del Carmen (Cuota)	MEX-180D
11	Libramiento de Felipe Carrillo Puerto (Cuota)	MEX-307D
12	Mérida - Cancún (Cuota)	MEX-180D

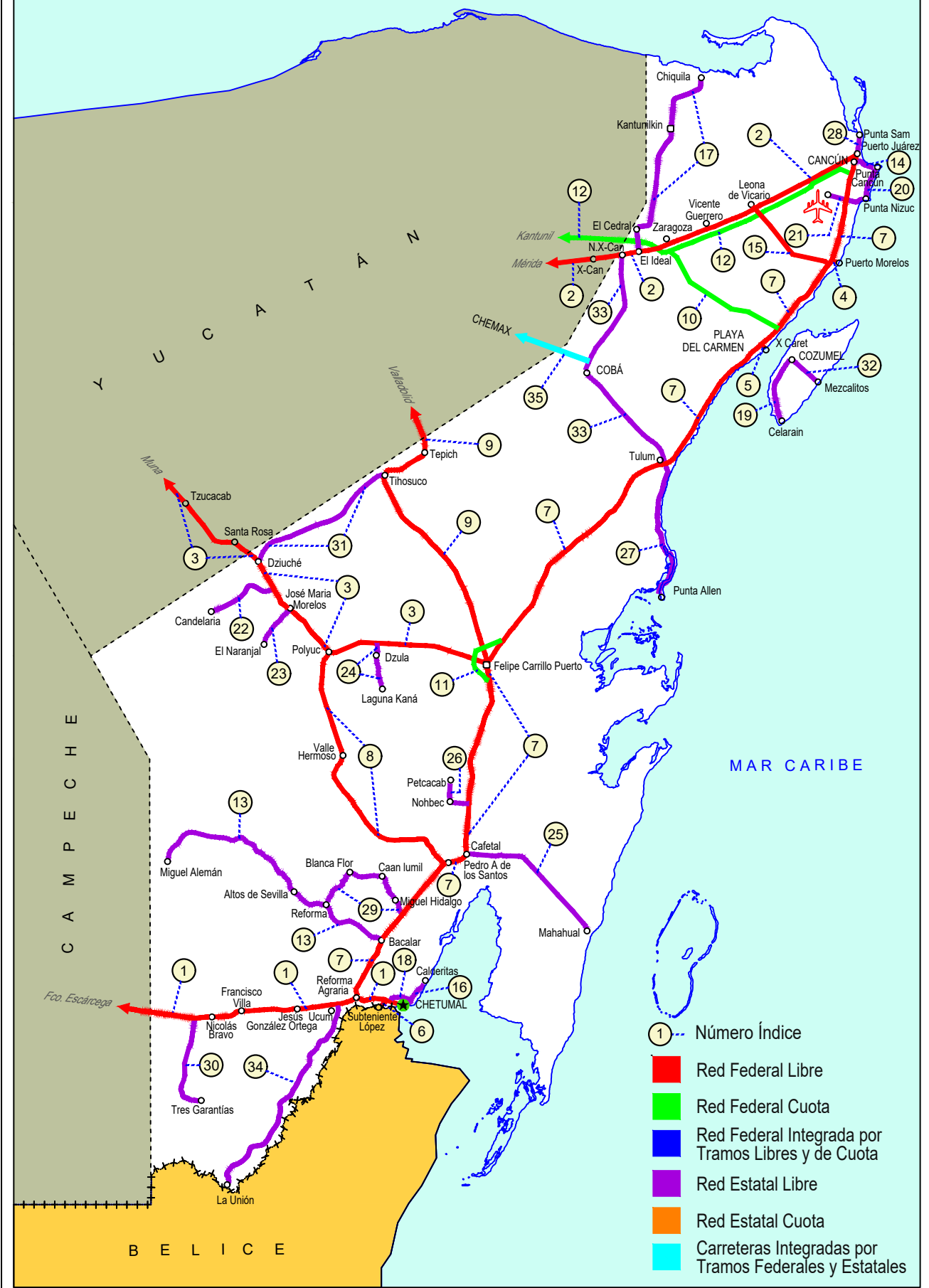
---RED ESTATAL LIBRE---

13	Bacalar - Miguel Alemán	QR
14	Cancún - Punta Cancún	QR
15	Central Vallarta - Leona Vicario	QR
16	Chetumal - Calderitas	QR-004
17	El Ideal - Chiquila	QR-005
18	Libramiento de Chetumal	QR
19	Perimetral Cozumel	QR
20	Punta Nizuc - Cancún	QR
21	Ramal a Aeropuerto Cancún	QR
22	Ramal a Candelaria	QR
23	Ramal a El Naranjal	QR
24	Ramal a Laguna de Kaná	QR
25	Ramal a Mahahual	QR
26	Ramal a Petcacab	QR-018
27	Ramal a Punta Allen	QR-015
28	Ramal a Punta Sam	QR
29	Ramal a Reforma	QR-016
30	Ramal a Tres Garantías	QR
31	Tihosuco - Dziuche	QR
32	Transversal de Cozumel	QR
33	Tulum - Nuevo X-Can	QR
34	Ucum - Unión	QR

---CARRETERAS INTEGRADAS POR TRAMOS FEDERALES Y ESTATALES---

35	Chemax - Cobá	YUC-MEX-180
----	---------------	-------------

23 QUINTANA ROO



QUINTANA ROO

1 CARR: Francisco Escárcega - Chetumal

CLAVE: 00093

RUTA: MEX-186-307

AÑO: 2025

LUGAR	ESTACION				CLASIFICACION VEHICULAR EN PORCIENTO										COORDENADAS					
	KM	TE	SC	TDPA	M	A	B	C2	C3	T3S2	T3S3	T3S2R4	OTROS	A	B	C	K'	D	LATITUD	LONGITUD
Francisco Escárcega	0.00	3	0	4899	16.4	62.5	4.0	3.6	1.9	5.7	1.5	3.5	0.9	78.9	4.0	17.1	0.074	0.539	18.604133	-90.718114
Adolfo López Mateos	41.50	1	0	3389	8.5	67.1	5.0	3.9	2.1	5.6	1.8	5.1	0.9	75.6	5.0	19.4	0.072	0.547	18.642310	-90.314937
T. Der. Silvituc	55.70	1	0	3349	10.9	67.0	4.7	3.5	2.1	5.1	1.8	4.1	0.8	77.9	4.7	17.4	0.075	0.508	18.651245	-90.276044
T. Der. Silvituc	55.70	3	0	3104	10.0	66.6	5.0	3.8	2.1	6.1	1.7	4.2	0.5	76.6	5.0	18.4	0.061	0.516	18.649497	-90.261985
Conhuás	100.00	1	0	2861	11.3	59.0	5.4	4.9	3.2	6.4	3.3	5.7	0.8	70.3	5.4	24.3	0.058	0.612	18.541254	-89.931518
Xpujil	155.73	1	0	3517	8.6	66.1	4.6	3.9	2.4	5.9	1.8	5.8	0.9	74.7	4.6	20.7	0.081	0.650	18.509271	-89.409054
Lim. Edos. Term. Camp. Ppia. Oroo.	179.90																			
X. C. Caobas - Chacanbacab	186.00	3	0	4198	6.5	50.7	7.2	5.0	9.5	8.4	5.8	6.0	0.9	57.2	7.2	35.6	0.078	0.565	18.468405	-89.093005
Nicolás Bravo	206.01	1	0	3967	7.9	65.0	5.3	5.1	2.1	7.3	2.4	4.5	0.4	72.9	5.3	21.8	0.060	0.525	18.458542	-88.939073
Nicolás Bravo	206.01	3	0	4489	7.3	69.6	4.9	4.0	1.7	5.3	1.5	4.8	0.9	76.9	4.9	18.2	0.073	0.537	18.459105	-88.920160
T. Izq. Morocoy	214.90	1	0	3766	7.7	67.7	5.5	4.2	2.2	6.1	1.9	3.9	0.8	75.4	5.5	19.1	0.101	0.639	18.478808	-88.817220
T. Izq. Morocoy	214.90	3	0	3943	6.1	67.7	4.6	4.2	2.1	7.5	2.7	4.2	0.9	73.8	4.6	21.6	0.072	0.625	18.478868	-88.815752
T. Der. Unión	247.50	1	0	6201	7.6	67.9	5.5	4.2	1.6	7.0	1.9	3.4	0.9	75.5	5.5	19.0	0.087	0.565	18.504274	-88.532220
T. Der. Unión	247.50	3	0	10405	9.4	75.8	1.7	4.9	1.3	3.0	0.9	2.3	0.7	85.2	1.7	13.1	0.070	0.558	18.508701	-88.504628
T. Izq. Fpe. Carrillo Puerto	255.15	1	0	10118	6.7	80.0	2.6	2.3	2.9	2.7	0.7	1.5	0.6	86.7	2.6	10.7	0.063	0.532	18.523827	-88.473455
T. Der. Subteniente López	268.57	1	1	11568	4.4	89.9	1.2	2.4	0.9	0.5	0.2	0.3	0.2	94.3	1.2	4.5	0.076	0.526	18.516650	-88.378007
T. Der. Subteniente López	268.57	1	2	10662	4.3	90.0	1.2	2.4	0.9	0.5	0.2	0.3	0.2	94.3	1.2	4.5	0.077	0.526	18.516727	-88.377867
T. Izq. Av. Insurgentes	270.00	1	1	17754	9.9	81.9	1.3	3.9	1.3	0.8	0.2	0.5	0.2	91.8	1.3	6.9	0.085	0.525	18.513270	-88.362844
T. Izq. Av. Insurgentes	270.00	1	2	15113	9.8	82.4	1.5	3.7	1.4	0.8	0.1	0.2	0.1	92.2	1.5	6.3	0.081	0.525	18.513108	-88.361522
T. Izq. Av. Insurgentes	270.00	3	1	5050	5.7	88.4	0.8	2.3	1.0	0.7	0.6	0.4	0.1	94.1	0.8	5.1	0.080	0.503	18.508522	-88.348146
T. Izq. Av. Insurgentes	270.00	3	2	5810	5.4	89.1	1.0	2.1	0.9	0.6	0.5	0.3	0.1	94.5	1.0	4.5	0.083	0.503	18.508620	-88.348121
Chetumal	277.36	1	1	8641	7.9	88.1	0.4	2.1	0.6	0.2	0.3	0.2	0.2	96.0	0.4	3.6	0.098	0.536	18.501960	-88.322222
Chetumal	277.36	1	2	7865	7.9	87.9	0.4	2.1	0.6	0.3	0.4	0.2	0.2	95.8	0.4	3.8	0.104	0.536	18.502081	-88.322253

2 CARR: Mérida - Puerto Juárez

CLAVE: 00067

RUTA: MEX-180

AÑO: 2025

LUGAR	ESTACION				CLASIFICACION VEHICULAR EN PORCIENTO										COORDENADAS					
	KM	TE	SC	TDPA	M	A	B	C2	C3	T3S2	T3S3	T3S2R4	OTROS	A	B	C	K'	D	LATITUD	LONGITUD
Mérida	0.00																			
X. Periférico de Mérida	5.60	1	1	14060	13.5	80.7	0.7	3.1	0.8	0.4	0.4	0.3	0.1	94.2	0.7	5.1	0.076	0.542	20.956878	-89.570748
X. Periférico de Mérida	5.60	1	2	14106	13.3	80.9	0.7	3.1	0.9	0.4	0.3	0.3	0.1	94.2	0.7	5.1	0.078	0.542	20.956914	-89.570608
X. Periférico de Mérida	5.60	3	1	19452	12.0	74.3	1.6	4.0	1.9	2.6	1.1	2.0	0.5	86.3	1.6	12.1	0.064	0.501	20.953658	-89.564427
X. Periférico de Mérida	5.60	3	2	20125	12.0	76.1	1.2	3.8	1.8	2.6	0.6	1.6	0.3	88.1	1.2	10.7	0.064	0.501	20.953732	-89.564329
Teya	13.00	1	1	15226	7.8	77.1	2.7	3.7	2.3	3.1	0.6	2.1	0.6	84.9	2.7	12.4	0.079	0.578	20.935144	-89.527542
Teya	13.00	1	2	15765	7.6	76.6	2.5	4.2	2.5	3.2	0.8	2.0	0.6	84.2	2.5	13.3	0.092	0.578	20.935237	-89.527498

QUINTANA ROO

2 CARR: Mérida - Puerto Juárez

CLAVE: 00067

RUTA: MEX-180

AÑO: 2025

LUGAR	ESTACION				CLASIFICACION VEHICULAR EN PORCIENTO										COORDENADAS					
	KM	TE	SC	TDPA	M	A	B	C2	C3	T3S2	T3S3	T3S2R4	OTROS	A	B	C	K'	D	LATITUD	LONGITUD
T. C. Teya - Peto	14.20	3	1	8224	10.5	72.2	2.8	4.5	2.9	3.2	1.0	2.3	0.6	82.7	2.8	14.5	0.100	0.555	20.922004	-89.495398
T. C. Teya - Peto	14.20	3	2	8464	10.5	72.4	2.8	4.4	2.6	3.4	1.0	2.3	0.6	82.9	2.8	14.3	0.106	0.555	20.922033	-89.495239
T. Der. Ticopó	21.40	3	1	8388	9.8	73.7	2.6	4.6	2.4	3.2	0.7	2.4	0.6	83.5	2.6	13.9	0.083	0.544	20.893156	-89.435388
T. Der. Ticopó	21.40	3	2	8587	9.6	73.6	2.4	4.5	2.0	3.7	0.9	2.5	0.8	83.2	2.4	14.4	0.105	0.544	20.893263	-89.435365
T. Der. Seyé	28.79	1	1	8686	5.5	78.2	2.9	4.2	1.6	3.0	1.1	2.8	0.7	83.7	2.9	13.4	0.071	0.628	20.895818	-89.391642
T. Der. Seyé	28.79	1	2	9125	5.4	78.7	3.0	4.4	1.5	3.1	1.1	2.2	0.6	84.1	3.0	12.9	0.082	0.628	20.895916	-89.391584
T. Der. Seyé	28.79	3	1	6833	5.7	76.3	2.8	4.6	1.7	3.6	1.6	2.9	0.8	82.0	2.8	15.2	0.091	0.537	20.891733	-89.374370
T. Der. Seyé	28.79	3	2	6843	5.5	77.2	2.9	4.5	1.7	3.4	1.5	2.6	0.7	82.7	2.9	14.4	0.106	0.537	20.891884	-89.373865
Tahmek (1er Acceso)	40.00	1	1	6890	4.4	76.3	2.6	5.0	2.4	4.0	1.1	3.1	1.1	80.7	2.6	16.7	0.080	0.730	20.876042	-89.279087
Tahmek (1er Acceso)	40.00	1	2	7167	4.2	76.6	2.9	4.9	2.0	4.4	1.0	3.0	1.0	80.8	2.9	16.3	0.105	0.730	20.876156	-89.279048
T. C. Libramiento de Tahmek - Hoctun - Xocchel Oeste	42.00	1	1	6899	3.0	79.6	3.0	3.8	1.8	3.9	0.9	3.2	0.8	82.6	3.0	14.4	0.075	0.517	20.881253	-89.259540
T. C. Libramiento de Tahmek - Hoctun - Xocchel Oeste	42.00	1	2	7042	2.9	80.5	3.2	4.3	1.5	3.5	0.6	2.8	0.7	83.4	3.2	13.4	0.086	0.517	20.881347	-89.259602
T. Izq. Hoctún (1º Acceso)	46.65	1	0	2963	10.8	76.9	2.0	7.4	1.3	1.0	0.4	0.2	0.0	87.7	2.0	10.3	0.075	0.619	20.867620	-89.214673
T. Izq. Hoctún (2º Acceso)	48.62	1	0	1530	10.7	77.7	1.4	7.6	0.9	0.8	0.5	0.4	0.0	88.4	1.4	10.2	0.071	0.706	20.858569	-89.201785
T. Izq. Hoctún (2º Acceso)	48.62	3	0	2827	28.2	61.7	1.6	6.4	1.0	0.5	0.3	0.2	0.1	89.9	1.6	8.5	0.076	0.630	20.854941	-89.196293
Xocchel	51.70																			
T. C. Libramiento de Tahmek - Hoctun - Xocchel	56.00	1	0	485	25.2	57.9	1.4	11.0	2.1	1.5	0.3	0.6	0.0	83.1	1.4	15.5	0.113	0.509	20.830956	-89.166728
Kantunil	67.28	1	1	4912	3.2	77.0	3.1	3.7	2.3	4.5	1.2	4.1	0.9	80.2	3.1	16.7	0.089	0.551	20.801953	-89.053571
Kantunil	67.28	1	2	4298	3.1	76.4	3.2	3.9	2.3	4.7	1.4	4.2	0.8	79.5	3.2	17.3	0.114	0.551	20.802038	-89.053444
Kantunil	67.28	3	0	5249	6.5	78.4	2.4	4.9	3.4	2.6	0.9	0.8	0.1	84.9	2.4	12.7	0.079	0.539	20.791188	-89.019077
Libre Unión	92.91	1	0	3334	5.5	77.6	3.3	6.1	3.1	2.1	1.3	0.9	0.1	83.1	3.3	13.6	0.087	0.622	20.708792	-88.818041
Libre Unión	92.91	3	0	2963	6.3	77.0	3.0	6.3	3.1	2.1	1.5	0.6	0.1	83.3	3.0	13.7	0.101	0.595	20.706923	-88.799715
Piste	116.30	3	0	10176	14.9	77.5	1.7	2.6	1.9	0.7	0.3	0.3	0.1	92.4	1.7	5.9	0.090	0.630	20.690927	-88.579693
1er. Acceso a Zona Arqueológica de Chichen-Itzá	117.90	3	0	7869	14.2	73.0	2.4	5.2	1.4	2.2	0.7	0.6	0.3	87.2	2.4	10.4	0.086	0.610	20.688326	-88.572400
2do. Acceso a Zona Arqueológica de Chichen-Itzá	121.10	3	0	5884	14.5	74.3	2.3	4.3	2.0	1.6	0.4	0.5	0.1	88.8	2.3	8.9	0.093	0.607	20.668815	-88.556557
T. Der. Chankom	127.00	1	0	5401	9.0	76.7	3.5	5.3	2.2	1.3	0.8	1.0	0.2	85.7	3.5	10.8	0.104	0.641	20.644181	-88.495171
T. Der. Chankom	127.00	3	0	4837	7.8	78.3	2.8	5.7	2.5	1.7	0.6	0.5	0.1	86.1	2.8	11.1	0.107	0.632	20.637636	-88.474660
Kaua	137.47	3	0	6113	8.8	78.5	3.5	4.4	1.9	1.4	0.6	0.7	0.2	87.3	3.5	9.2	0.094	0.626	20.623598	-88.401764
X. C. Periférico de Valladolid	157.12	1	0	9083	12.3	76.3	2.8	4.0	1.8	1.2	0.6	0.9	0.1	88.6	2.8	8.6	0.087	0.595	20.673464	-88.248462
Valladolid	160.68	1	0	9729	19.4	74.9	1.6	3.0	0.5	0.3	0.1	0.2	0.0	94.3	1.6	4.1	0.090	0.680	20.682788	-88.233521
Valladolid	160.68	3	0	8844	23.0	71.7	0.9	2.3	0.9	0.5	0.1	0.5	0.1	94.7	0.9	4.4	0.090	0.549	20.694975	-88.164018
X. C. Periférico de Valladolid	165.60	3	0	11004	13.0	74.9	1.8	2.9	2.8	2.5	0.8	1.2	0.1	87.9	1.8	10.3	0.075	0.579	20.696278	-88.155113
T. Der. Coba	187.80	1	0	7722	6.2	81.6	1.9	3.2	2.1	2.8	0.8	1.1	0.3	87.8	1.9	10.3	0.086	0.577	20.659642	-87.961779
T. Der. Chemax	189.79	1	0	5772	10.2	81.0	1.3	3.4	1.3	1.3	0.3	0.8	0.4	91.2	1.3	7.5	0.093	0.504	20.657881	-87.951525
T. Der. Chemax	189.79	3	0	4686	9.4	79.2	1.5	3.9	2.2	2.3	0.5	0.9	0.1	88.6	1.5	9.9	0.088	0.590	20.666374	-87.923166

QUINTANA ROO

2 CARR: Mérida - Puerto Juárez

CLAVE: 00067

RUTA: MEX-180

AÑO: 2025

LUGAR	ESTACION				CLASIFICACION VEHICULAR EN PORCIENTO														COORDENADAS	
	KM	TE	SC	TDPA	M	A	B	C2	C3	T3S2	T3S3	T3S2R4	OTROS	A	B	C	K'	D	LATITUD	LONGITUD
X-Can	225.00	3	0	3476	4.8	82.9	2.1	4.4	2.0	2.2	0.7	0.7	0.2	87.7	2.1	10.2	0.080	0.705	20.860448	-87.656785
Lim. Edos. Term. Yuc. Ppia. Q. R.	230.40																			
Nuevo X-Can	231.90	3	0	4428	4.1	83.9	1.5	5.0	2.1	2.2	0.5	0.5	0.2	88.0	1.5	10.5	0.077	0.638	20.871577	-87.591142
Zaragoza	239.00	1	0	5711	11.0	76.8	2.1	4.7	1.9	2.2	0.7	0.5	0.1	87.8	2.1	10.1	0.074	0.591	20.880576	-87.537662
Zaragoza	239.00	3	0	4150	6.5	79.5	1.9	5.7	2.5	2.7	0.4	0.7	0.1	86.0	1.9	12.1	0.077	0.682	20.883935	-87.517716
Vicente Guerrero	261.00	1	0	4648	8.5	77.7	1.8	4.9	3.7	2.3	0.5	0.5	0.1	86.2	1.8	12.0	0.069	0.699	20.940875	-87.331815
Leona Vicario	275.50	1	0	5960	5.4	81.8	2.2	4.8	1.6	2.7	0.8	0.6	0.1	87.2	2.2	10.6	0.075	0.698	20.979981	-87.225879
Leona Vicario	275.50	3	0	8796	14.7	75.5	2.1	3.8	1.3	1.5	0.4	0.6	0.1	90.2	2.1	7.7	0.073	0.594	20.993427	-87.188800
T. Der. Aeropuerto	302.50	1	0	10838	6.1	82.2	1.6	3.9	3.3	1.6	0.7	0.5	0.1	88.3	1.6	10.1	0.074	0.602	21.096412	-86.982974
T. Der. Aeropuerto	302.50	3	1	6484	5.3	75.3	1.8	8.6	3.7	2.2	0.8	1.7	0.6	80.6	1.8	17.6	0.085	0.537	21.102759	-86.970021
T. Der. Aeropuerto	302.50	3	2	7058	5.2	75.5	2.0	8.4	3.7	2.0	0.9	1.8	0.5	80.7	2.0	17.3	0.083	0.537	21.102885	-86.970111
T. Der. Alfredo V. Bonfil	310.00	1	1	34332	7.9	81.8	1.1	2.9	1.6	1.7	0.3	2.3	0.4	89.7	1.1	9.2	0.068	0.571	21.138152	-86.899046
T. Der. Alfredo V. Bonfil	310.00	1	2	35133	7.7	82.6	1.0	2.6	1.9	1.4	0.2	2.4	0.2	90.3	1.0	8.7	0.063	0.571	21.138372	-86.898919
Puerto Juárez	321.41																			

3 CARR: Muna - Felipe Carrillo Puerto

CLAVE: 00148

RUTA: MEX-184

AÑO: 2025

LUGAR	ESTACION				CLASIFICACION VEHICULAR EN PORCIENTO														COORDENADAS	
	KM	TE	SC	TDPA	M	A	B	C2	C3	T3S2	T3S3	T3S2R4	OTROS	A	B	C	K'	D	LATITUD	LONGITUD
Muna	0.00	3	0	5139	8.7	76.3	1.2	8.8	1.1	1.6	0.8	1.0	0.5	85.0	1.2	13.8	0.077	0.556	20.475155	-89.695241
Ticul	19.10	1	0	3741	8.5	77.2	1.2	8.6	1.2	1.6	0.8	0.8	0.1	85.7	1.2	13.1	0.082	0.574	20.407160	-89.574487
Ticul	19.10	3	0	8297	35.2	52.8	1.3	5.0	0.6	3.5	0.6	0.4	0.6	88.0	1.3	10.7	0.092	0.545	20.373282	-89.517423
Oxkutzcab	40.50	3	0	7175	21.3	66.6	1.3	5.5	1.2	1.6	1.4	0.7	0.4	87.9	1.3	10.8	0.083	0.603	20.281694	-89.374505
Tekax	53.90	3	0	5465	44.3	49.2	0.6	3.1	1.2	0.7	0.3	0.5	0.1	93.5	0.6	5.9	0.116	0.510	20.189061	-89.268750
Tzucacab	86.60	1	0	1903	35.3	58.2	0.7	4.5	0.6	0.4	0.2	0.1	0.0	93.5	0.7	5.8	0.088	0.506	20.078574	-89.062402
Tzucacab	86.60	3	0	1236	40.6	56.8	0.4	1.2	0.6	0.2	0.2	0.0	0.0	97.4	0.4	2.2	0.092	0.658	20.061804	-89.035655
Santa Rosa	109.60	3	0	2233	7.9	76.2	3.0	4.9	1.7	2.0	0.8	2.8	0.7	84.1	3.0	12.9	0.090	0.540	19.947272	-88.880194
Lim. Edos. Term. Yuc. Ppia. Q. R.	117.00																			
Dziuche	118.00	1	0	2419	7.3	75.9	3.3	4.9	1.9	1.8	1.0	3.1	0.8	83.2	3.3	13.5	0.091	0.530	19.905499	-88.819736
Dziuche	118.00	3	0	3590	6.5	74.6	3.4	7.3	2.4	2.0	0.9	2.5	0.4	81.1	3.4	15.5	0.074	0.504	19.888350	-88.803513
José María Morelos	138.60	1	0	4693	15.3	75.7	1.5	3.4	1.3	0.8	0.3	1.3	0.4	91.0	1.5	7.5	0.081	0.547	19.764606	-88.725282
José María Morelos	138.60	3	0	3328	12.3	73.8	2.3	3.6	2.1	2.0	1.2	2.4	0.3	86.1	2.3	11.6	0.071	0.500	19.736541	-88.691429
Polyuc	161.94	1	0	2855	12.5	72.3	2.5	5.0	1.8	2.1	0.9	2.7	0.2	84.8	2.5	12.7	0.076	0.525	19.611357	-88.571475
Polyuc	161.94	3	0	1590	9.4	80.0	1.7	4.3	1.6	1.5	0.7	0.4	0.4	89.4	1.7	8.9	0.081	0.570	19.609514	-88.553363
T. Der. Dzulá	178.11	3	0	1557	6.9	82.6	1.5	4.0	1.5	1.8	0.5	1.0	0.2	89.5	1.5	9.0	0.094	0.524	19.643251	-88.400908

QUINTANA ROO

3 CARR : Muna - Felipe Carrillo Puerto

CLAVE: 00148

RUTA: MEX-184

AÑO: 2025

LUGAR	ESTACION				CLASIFICACION VEHICULAR EN PORCIENTO														COORDENADAS	
	KM	TE	SC	TDPA	M	A	B	C2	C3	T3S2	T3S3	T3S2R4	OTROS	A	B	C	K'	D	LATITUD	LONGITUD
Felipe Carrillo Puerto	216.97	1	0	8010	27.1	69.1	0.8	1.4	0.7	0.4	0.1	0.4	0.0	96.2	0.8	3.0	0.078	0.518	19.584767	-88.058872

4 CARR : Ramal a Puerto Morelos

CLAVE: 23569

RUTA: MEX

AÑO: 2025

LUGAR	ESTACION				CLASIFICACION VEHICULAR EN PORCIENTO														COORDENADAS	
	KM	TE	SC	TDPA	M	A	B	C2	C3	T3S2	T3S3	T3S2R4	OTROS	A	B	C	K'	D	LATITUD	LONGITUD
T. C. Reforma Agraria - Puerto Juárez	0.00	3	0	14999	9.8	85.8	1.4	2.4	0.4	0.1	0.0	0.1	0.0	95.6	1.4	3.0	0.079	0.524	20.852840	-86.889188
Puerto Morelos	2.20																			

5 CARR : Ramal a Punta Piedra

CLAVE: 23575

RUTA: MEX

AÑO: 2025

LUGAR	ESTACION				CLASIFICACION VEHICULAR EN PORCIENTO														COORDENADAS	
	KM	TE	SC	TDPA	M	A	B	C2	C3	T3S2	T3S3	T3S2R4	OTROS	A	B	C	K'	D	LATITUD	LONGITUD
T. C. Reforma Agraria - Puerto Juárez	0.00	3	1	9504	19.9	72.2	1.6	1.8	1.2	0.9	0.5	1.4	0.5	92.1	1.6	6.3	0.060	0.516	20.625714	-87.080534
T. C. Reforma Agraria - Puerto Juárez	0.00	3	2	9056	20.6	70.5	1.7	2.2	1.5	1.1	0.5	1.5	0.4	91.1	1.7	7.2	0.064	0.516	20.625761	-87.080482
Punta Piedra (Playa del Carmen)	1.50																			

6 CARR : Ramal a Subteniente López

CLAVE: 23567

RUTA: MEX-186

AÑO: 2025

LUGAR	ESTACION				CLASIFICACION VEHICULAR EN PORCIENTO														COORDENADAS	
	KM	TE	SC	TDPA	M	A	B	C2	C3	T3S2	T3S3	T3S2R4	OTROS	A	B	C	K'	D	LATITUD	LONGITUD
T. C. Francisco Escárcega - Chetumal	0.00	3	1	3892	8.5	82.0	0.9	4.6	1.1	1.6	0.5	0.6	0.2	90.5	0.9	8.6	0.120	0.629	18.508263	-88.380228
T. C. Francisco Escárcega - Chetumal	0.00	3	2	4567	8.6	81.6	1.1	4.5	1.1	1.7	0.5	0.7	0.2	90.2	1.1	8.7	0.119	0.629	18.508209	-88.380166
T Der. Aduana Santa Elena	1.80	3	1	3366	12.9	83.6	0.8	1.3	0.6	0.6	0.1	0.0	0.1	96.5	0.8	2.7	0.067	0.505	18.500344	-88.385650
T Der. Aduana Santa Elena	1.80	3	2	3202	12.3	83.7	0.9	1.5	0.8	0.5	0.1	0.1	0.1	96.0	0.9	3.1	0.083	0.505	18.500320	-88.385569
Subteniente López	3.00																			

7 CARR : Reforma Agraria - Puerto Juárez

CLAVE: 23132

RUTA: MEX-307

AÑO: 2025

LUGAR	ESTACION				CLASIFICACION VEHICULAR EN PORCIENTO														COORDENADAS	
	KM	TE	SC	TDPA	M	A	B	C2	C3	T3S2	T3S3	T3S2R4	OTROS	A	B	C	K'	D	LATITUD	LONGITUD
T. C. Francisco Escárcega - Chetumal	0.00	3	1	8004	4.7	80.5	2.9	5.3	1.6	2.0	0.8	1.7	0.5	85.2	2.9	11.9	0.073	0.565	18.539942	-88.467267
T. C. Francisco Escárcega - Chetumal	0.00	3	2	7585	4.8	80.6	2.9	5.2	1.6	2.0	0.7	1.8	0.4	85.4	2.9	11.7	0.069	0.565	18.540151	-88.467381
Bacalar	19.15	1	1	7018	3.3	82.7	2.4	5.5	1.2	2.0	0.8	1.6	0.5	86.0	2.4	11.6	0.079	0.552	18.661046	-88.403971
Bacalar	19.15	1	2	7823	3.5	82.4	2.4	5.6	1.2	2.1	0.8	1.7	0.3	85.9	2.4	11.7	0.074	0.552	18.661118	-88.404048

QUINTANA ROO

7 CARR: Reforma Agraria - Puerto Juárez

CLAVE: 23132

RUTA: MEX-307

AÑO: 2025

LUGAR	ESTACION				CLASIFICACION VEHICULAR EN PORCIENTO													COORDENADAS		
	KM	TE	SC	TDPA	M	A	B	C2	C3	T3S2	T3S3	T3S2R4	OTROS	A	B	C	K'	D	LATITUD	LONGITUD
Bacalar	19.15	3	0	12140	3.2	81.2	2.6	6.0	1.3	2.5	0.7	2.1	0.4	84.4	2.6	13.0	0.080	0.527	18.695974	-88.388280
T. Izq. Reforma	22.24	3	0	11717	3.1	81.6	2.6	4.2	1.8	3.2	0.9	2.0	0.6	84.7	2.6	12.7	0.100	0.669	18.706827	-88.384533
Buenvista	46.90	1	0	6309	3.0	79.7	3.7	4.2	1.8	3.2	1.3	2.4	0.7	82.7	3.7	13.6	0.096	0.592	18.879260	-88.246379
Buenvista	46.90	3	0	8127	3.9	77.1	3.8	4.8	2.1	3.6	1.2	2.7	0.8	81.0	3.8	15.2	0.083	0.515	18.889943	-88.237159
T. Izq. Lazáro Cárdenas	56.30	1	0	7075	3.7	77.7	2.8	6.0	2.2	2.8	1.4	2.5	0.9	81.4	2.8	15.8	0.067	0.668	18.941907	-88.189467
T. Izq. Lazáro Cárdenas	56.30	3	0	5716	3.6	78.8	2.6	5.5	1.9	2.7	1.3	2.8	0.8	82.4	2.6	15.0	0.085	0.517	18.950654	-88.180900
T. Izq. Chacchoben	70.80	1	0	6134	4.7	74.2	4.0	6.1	1.9	4.1	1.1	3.1	0.8	78.9	4.0	17.1	0.064	0.509	19.010935	-88.111235
T. Izq. Chacchoben	70.80	3	0	6331	4.6	75.5	3.5	5.9	1.8	3.8	1.2	2.9	0.8	80.1	3.5	16.4	0.069	0.515	19.034702	-88.110100
T. Izq. Noh-Bec	81.94	1	0	5950	4.5	75.1	3.5	5.8	2.4	3.6	1.5	2.9	0.7	79.6	3.5	16.9	0.081	0.658	19.131764	-88.105381
T. Izq. Noh-Bec	81.94	3	0	4620	5.0	74.2	4.6	5.5	2.3	3.5	1.2	3.0	0.7	79.2	4.6	16.2	0.098	0.543	19.140943	-88.104947
Libramiento Felipe Carrillo Puerto (Cuota)	128.00	1	0	5545	5.4	75.8	4.0	5.2	2.0	3.2	1.2	2.5	0.7	81.2	4.0	14.8	0.083	0.559	19.537328	-88.040292
Felipe Carrillo Puerto	132.00	1	0	5137	4.6	84.5	3.1	3.3	0.9	1.4	0.5	1.4	0.3	89.1	3.1	7.8	0.073	0.613	19.553962	-88.042952
Felipe Carrillo Puerto	132.00	3	0	4722	3.9	80.3	4.3	4.8	2.1	1.8	0.8	1.7	0.3	84.2	4.3	11.5	0.094	0.590	19.597199	-88.033813
Libramiento Felipe Carrillo Puerto (Cuota)	138.25	1	0	5496	3.9	80.1	4.4	5.0	1.7	2.1	0.8	1.6	0.4	84.0	4.4	11.6	0.090	0.577	19.620599	-88.015167
T. Izq. Chumpón	184.40	1	0	5470	3.3	76.7	5.9	6.4	1.3	3.0	0.9	2.0	0.5	80.0	5.9	14.1	0.096	0.505	19.948082	-87.772399
Tulum Pueblo	227.00	1	0	17934	7.1	83.1	2.7	3.3	1.3	1.2	0.3	0.7	0.3	90.2	2.7	7.1	0.084	0.505	20.201659	-87.492285
Tulum Pueblo	227.00	3	1	13903	4.6	91.3	0.8	2.2	0.3	0.2	0.3	0.2	0.1	95.9	0.8	3.3	0.077	0.530	20.209627	-87.467395
Tulum Pueblo	227.00	3	2	12257	4.5	91.2	0.8	2.5	0.3	0.2	0.2	0.2	0.1	95.7	0.8	3.5	0.083	0.530	20.209732	-87.467308
T. Izq. Cobá	229.19	1	1	12254	3.5	90.1	0.7	1.9	1.5	0.7	0.2	1.0	0.4	93.6	0.7	5.7	0.061	0.521	20.213808	-87.454296
T. Izq. Cobá	229.19	1	2	13000	3.6	90.3	0.5	1.6	1.8	0.9	0.4	0.6	0.3	93.9	0.5	5.6	0.069	0.521	20.214056	-87.453889
T. Izq. Cobá	229.19	3	1	17264	7.3	84.0	1.7	3.4	1.5	0.9	0.3	0.6	0.3	91.3	1.7	7.0	0.079	0.567	20.215545	-87.448868
T. Izq. Cobá	229.19	3	2	15319	7.3	83.9	1.5	3.8	1.3	1.0	0.2	0.7	0.3	91.2	1.5	7.3	0.074	0.567	20.215467	-87.449452
X. C. Tulum - Aeropuerto	231.19	1	1	14621	11.4	77.5	2.1	4.4	1.7	1.0	0.6	1.0	0.3	88.9	2.1	9.0	0.074	0.572	20.219100	-87.437776
X. C. Tulum - Aeropuerto	231.19	1	2	14489	11.5	76.9	2.4	4.8	1.4	1.0	0.5	1.2	0.3	88.4	2.4	9.2	0.067	0.572	20.219140	-87.438035
X. C. Tulum - Aeropuerto	231.19	3	1	12751	11.0	78.9	2.2	3.6	1.5	1.1	0.4	0.9	0.4	89.9	2.2	7.9	0.077	0.502	20.220080	-87.434758
X. C. Tulum - Aeropuerto	231.19	3	2	13617	10.4	79.9	2.3	3.8	1.2	0.8	0.4	1.0	0.2	90.3	2.3	7.4	0.084	0.502	20.220188	-87.434833
T. Der. Xel-Ha	244.80	1	1	11461	2.2	87.3	2.5	4.0	1.6	1.2	0.3	0.7	0.2	89.5	2.5	8.0	0.090	0.564	20.314624	-87.367787
T. Der. Xel-Ha	244.80	1	2	11855	2.3	86.5	2.6	4.1	1.6	1.3	0.5	0.8	0.3	88.8	2.6	8.6	0.081	0.564	20.314728	-87.367872
T. Der. Xel-Ha	244.80	3	1	12326	6.6	83.1	1.9	3.5	2.3	1.2	0.4	0.8	0.2	89.7	1.9	8.4	0.084	0.504	20.328198	-87.359916
T. Der. Xel-Ha	244.80	3	2	12703	6.5	82.7	2.3	3.9	1.9	1.1	0.4	1.0	0.2	89.2	2.3	8.5	0.080	0.504	20.328542	-87.359946
T. Der. Akumal	254.44	1	1	13459	2.2	85.7	3.6	5.3	1.0	1.0	0.3	0.7	0.2	87.9	3.6	8.5	0.101	0.679	20.395696	-87.321336
T. Der. Akumal	254.44	1	2	14314	2.3	85.3	3.4	5.4	1.1	1.2	0.3	0.7	0.3	87.6	3.4	9.0	0.071	0.679	20.395765	-87.321465
Puerto Aventuras	269.34	3	1	21941	4.6	85.0	2.9	4.9	0.9	0.8	0.3	0.5	0.1	89.6	2.9	7.5	0.074	0.534	20.516635	-87.211843
Puerto Aventuras	269.34	3	2	20093	4.8	84.0	2.9	5.2	1.1	1.0	0.3	0.6	0.1	88.8	2.9	8.3	0.072	0.534	20.516743	-87.211891
Playa del Carmen	289.70	1	1	30612	8.9	80.4	3.0	4.7	1.1	0.8	0.3	0.6	0.2	89.3	3.0	7.7	0.082	0.528	20.609438	-87.105216

QUINTANA ROO

7 CARR: Reforma Agraria - Puerto Juárez

CLAVE: 23132

RUTA: MEX-307

AÑO: 2025

LUGAR	ESTACION				CLASIFICACION VEHICULAR EN PORCIENTO										COORDENADAS					
	KM	TE	SC	TDPA	M	A	B	C2	C3	T3S2	T3S3	T3S2R4	OTROS	A	B	C	K'	D	LATITUD	LONGITUD
Playa del Carmen	289.70	1	2	30695	9.2	79.8	3.1	4.7	1.1	0.9	0.3	0.7	0.2	89.0	3.1	7.9	0.068	0.528	20.609535	-87.105422
Playa del Carmen	289.70	3	1	32242	5.6	86.5	2.1	4.0	1.1	0.3	0.1	0.2	0.1	92.1	2.1	5.8	0.061	0.506	20.666158	-87.054051
Playa del Carmen	289.70	3	2	32912	5.6	86.6	2.0	4.1	1.0	0.3	0.1	0.2	0.1	92.2	2.0	5.8	0.065	0.506	20.666349	-87.054162
T. Der. Puerto Morelos	321.48	1	1	27322	4.0	87.1	2.2	5.0	0.6	0.5	0.3	0.2	0.1	91.1	2.2	6.7	0.074	0.538	20.838199	-86.909825
T. Der. Puerto Morelos	321.48	1	2	25381	4.0	87.1	2.2	5.0	0.6	0.5	0.3	0.2	0.1	91.1	2.2	6.7	0.077	0.538	20.838287	-86.909996
T. Der. Puerto Morelos	321.48	3	1	29551	6.7	84.3	2.6	4.5	0.7	0.6	0.4	0.1	0.1	91.0	2.6	6.4	0.079	0.501	20.873297	-86.890441
T. Der. Puerto Morelos	321.48	3	2	28319	6.7	84.2	2.6	4.6	0.7	0.6	0.4	0.1	0.1	90.9	2.6	6.5	0.077	0.501	20.873349	-86.890614
T. C. Mérida - Cancún (Cuota)	339.82																			
T. Izq. Aeropuerto Cancún	341.50	1	1	33035	2.5	83.7	2.3	9.8	0.5	0.6	0.1	0.3	0.2	86.2	2.3	11.5	0.067	0.560	21.028128	-86.852733
T. Izq. Aeropuerto Cancún	341.50	1	2	35643	2.3	83.8	2.4	10.0	0.4	0.5	0.1	0.4	0.1	86.1	2.4	11.5	0.070	0.560	21.027943	-86.852925
T. Izq. Aeropuerto Cancún	341.50	3	1	45929	1.8	88.0	1.6	5.8	0.2	1.0	1.3	0.1	0.2	89.8	1.6	8.6	0.069	0.535	21.041221	-86.849850
T. Izq. Aeropuerto Cancún	341.50	3	2	44924	2.0	87.2	1.8	6.1	0.3	0.8	1.2	0.2	0.4	89.2	1.8	9.0	0.068	0.535	21.041001	-86.850024
T. Izq. Alfredo V. Bonfil	348.22	1	1	46547	1.9	83.5	2.1	9.6	0.8	0.4	1.0	0.5	0.2	85.4	2.1	12.5	0.071	0.502	21.082833	-86.843336
T. Izq. Alfredo V. Bonfil	348.22	1	2	44906	2.2	82.7	2.3	9.8	0.6	0.2	1.1	0.7	0.4	84.9	2.3	12.8	0.077	0.502	21.082849	-86.843444
Cancún	355.48	1	1	43149	1.5	83.6	2.2	9.8	0.9	0.6	1.1	0.2	0.1	85.1	2.2	12.7	0.077	0.536	21.107731	-86.839472
Cancún	355.48	1	2	46825	1.6	84.2	2.0	9.6	0.7	0.4	1.0	0.4	0.1	85.8	2.0	12.2	0.070	0.536	21.107742	-86.839597
T. C. Mérida - Puerto Juárez	357.48																			

8 CARR: T. C. (Reforma Agraria - Puerto Juárez) - Polyuc

CLAVE: 23014

RUTA: MEX-293

AÑO: 2025

LUGAR	ESTACION				CLASIFICACION VEHICULAR EN PORCIENTO										COORDENADAS					
	KM	TE	SC	TDPA	M	A	B	C2	C3	T3S2	T3S3	T3S2R4	OTROS	A	B	C	K'	D	LATITUD	LONGITUD
T. C. Reforma Agraria - Puerto Juárez	0.00	3	0	1882	8.9	77.7	3.6	3.5	1.9	1.8	0.7	1.7	0.2	86.6	3.6	9.8	0.100	0.638	18.950901	-88.189156
T. Izq. Chacchoben	4.35	1	0	1910	8.1	79.4	3.4	3.4	1.3	1.8	0.6	1.8	0.2	87.5	3.4	9.1	0.093	0.646	18.967170	-88.204246
T. Izq. Chacchoben	4.35	3	0	1732	6.9	77.5	3.8	4.2	1.8	2.3	0.7	2.6	0.2	84.4	3.8	11.8	0.094	0.630	18.982304	-88.218215
Valle Hermoso	49.00	1	0	1728	21.3	66.1	2.9	3.4	1.7	1.9	0.6	1.9	0.2	87.4	2.9	9.7	0.096	0.536	19.180787	-88.523273
T. Der. Santa María Poniente	68.40	1	0	1553	8.1	77.7	3.5	3.6	1.9	2.1	0.8	2.1	0.2	85.8	3.5	10.7	0.104	0.580	19.339561	-88.546698
T. Der. Santa María Poniente	68.40	3	0	1597	5.2	77.6	3.3	3.6	2.6	2.8	1.4	3.2	0.3	82.8	3.3	13.9	0.100	0.538	19.344788	-88.548280
T. Izq. Ramonal	75.30	1	0	1520	4.7	79.3	4.0	4.5	1.5	2.2	1.0	2.6	0.2	84.0	4.0	12.0	0.090	0.555	19.397941	-88.564294
T. Izq. Ramonal	75.30	3	0	1817	4.4	77.3	3.4	4.5	2.3	2.7	1.5	3.5	0.4	81.7	3.4	14.9	0.092	0.569	19.400642	-88.565107
Polyuc	100.00	1	0	3337	11.2	79.8	1.8	2.5	1.2	1.5	0.4	1.4	0.2	91.0	1.8	7.2	0.079	0.580	19.607546	-88.572065

QUINTANA ROO

9 CARR: Valladolid - Felipe Carrillo Puerto

CLAVE: 00010

RUTA: MEX-295

AÑO: 2025

LUGAR	ESTACION				CLASIFICACION VEHICULAR EN PORCIENTO										COORDENADAS					
	KM	TE	SC	TDPA	M	A	B	C2	C3	T3S2	T3S3	T3S2R4	OTROS	A	B	C	K'	D	LATITUD	LONGITUD
Valladolid	0.00	3	0	8364	31.7	61.5	0.7	3.4	0.6	1.2	0.1	0.2	0.6	93.2	0.7	6.1	0.072	0.516	20.673350	-88.204466
Chichimilá	6.90	3	0	3380	20.1	76.7	0.5	1.2	0.9	0.2	0.0	0.3	0.1	96.8	0.5	2.7	0.075	0.504	20.619998	-88.236640
Tekom	12.05	3	0	2254	19.2	77.1	0.8	1.5	0.5	0.3	0.0	0.5	0.1	96.3	0.8	2.9	0.078	0.537	20.589449	-88.265500
Tixcacalcupul	19.80	3	0	1170	15.1	76.9	1.4	4.4	0.8	0.3	0.1	0.7	0.3	92.0	1.4	6.6	0.092	0.519	20.520294	-88.270809
Lim. Edos. Term. Yuc. Ppia. Q. R.	46.00																			
Tepich	51.40	1	0	1072	21.3	72.9	0.5	1.4	2.3	0.4	0.2	0.5	0.5	94.2	0.5	5.3	0.097	0.558	20.247337	-88.255390
Tihosuco	65.00	1	0	1078	16.4	77.5	2.7	1.3	0.9	0.3	0.1	0.6	0.2	93.9	2.7	3.4	0.096	0.510	20.193024	-88.358590
Tihosuco	65.00	3	0	1214	18.7	75.1	1.0	3.5	0.7	0.3	0.1	0.4	0.2	93.8	1.0	5.2	0.095	0.565	20.188862	-88.387930
T. Izq. San Felipe Berriozábal	99.00	1	0	754	13.3	81.6	2.2	0.8	1.0	0.3	0.2	0.6	0.0	94.9	2.2	2.9	0.107	0.593	19.962293	-88.241441
T. Izq. San Felipe Berriozábal	99.00	3	0	888	12.6	82.7	1.6	1.0	1.0	0.6	0.2	0.3	0.0	95.3	1.6	3.1	0.105	0.516	19.961952	-88.241096
Señor	116.50	1	0	1383	16.0	77.4	2.1	2.7	0.7	0.3	0.1	0.4	0.3	93.4	2.1	4.5	0.085	0.547	19.851272	-88.143786
Señor	116.50	3	0	1806	12.5	77.5	2.9	4.5	0.7	0.8	0.4	0.4	0.3	90.0	2.9	7.1	0.076	0.551	19.832585	-88.131602
Felipe Carrillo Puerto	147.70	1	0	2336	18.0	75.2	1.4	3.7	0.4	0.4	0.4	0.5	0.0	93.2	1.4	5.4	0.099	0.519	19.602483	-88.053571

10 CARR: El Cedral - Playa del Carmen (Cuota)

CLAVE:

RUTA: MEX-180D

AÑO: 2025

LUGAR	ESTACION				CLASIFICACION VEHICULAR EN PORCIENTO										COORDENADAS					
	KM	TE	SC	TDPA	M	A	B	C2	C3	T3S2	T3S3	T3S2R4	OTROS	A	B	C	K'	D	LATITUD	LONGITUD
El Cedral	0.00																			
X. C. Mérida - Cancún (Cuota)	10.05	1	0	1283	4.4	79.3	4.1	3.6	4.1	2.6	1.6	0.2	0.1	83.7	4.1	12.2	0.094	0.633	20.909197	-87.447045
X. C. Mérida - Cancún (Cuota)	10.05	3	0	2514	2.7	81.7	5.2	3.4	1.5	1.8	0.5	3.0	0.2	84.4	5.2	10.4	0.093	0.809	20.884204	-87.426694
Plaza de Cobro Tintal	50.00	2	0	2500	2.0	82.9	5.3	2.2	1.0	2.4	0.4	3.6	0.2	84.9	5.3	9.8	0.090	0.500	20.698987	-87.144285
Playa del Carmen	56.30																			

11 CARR: Libramiento de Felipe Carrillo Puerto (Cuota)

CLAVE:

RUTA: MEX-307D

AÑO: 2025

LUGAR	ESTACION				CLASIFICACION VEHICULAR EN PORCIENTO										COORDENADAS					
	KM	TE	SC	TDPA	M	A	B	C2	C3	T3S2	T3S3	T3S2R4	OTROS	A	B	C	K'	D	LATITUD	LONGITUD
T. C. Reforma Agraria - Puerto Juárez (Sur)	0.00	3	0	1477	2.2	79.8	4.5	4.2	1.6	4.7	1.1	1.6	0.3	82.0	4.5	13.5	0.081	0.667	19.549790	-88.049183
Plaza de Cobro Felipe Carrillo Puerto	6.10	2	0	990	8.7	64.9	6.0	2.4	2.4	7.5	1.7	5.6	0.8	73.6	6.0	20.4	0.090	0.500	19.590397	-88.071289
X. C. Valladolid - Felipe Carrillo Puerto	9.00	1	0	1923	4.6	73.2	5.2	3.4	2.5	5.3	1.5	3.8	0.5	77.8	5.2	17.0	0.079	0.513	19.606085	-88.060453
T. C. Reforma Agraria - Puerto Juárez (Norte)	13.92	1	0	1670	4.1	70.4	6.5	4.0	3.1	5.2	1.7	4.5	0.5	74.5	6.5	19.0	0.077	0.695	19.622987	-88.017076

QUINTANA ROO

12 CARR: Mérida - Cancún (Cuota)

CLAVE: 00071

RUTA: MEX-180D

AÑO: 2025

LUGAR	ESTACION				CLASIFICACION VEHICULAR EN PORCIENTO										COORDENADAS					
	KM	TE	SC	TDPA	M	A	B	C2	C3	T3S2	T3S3	T3S2R4	OTROS	A	B	C	K'	D	LATITUD	LONGITUD
T. C. Mérida - Puerto Juárez	66.00	3	1	4899	2.4	72.1	5.2	5.0	2.8	4.7	1.7	4.9	1.2	74.5	5.2	20.3	0.076	0.539	20.802763	-89.044808
T. C. Mérida - Puerto Juárez	66.00	3	2	5196	2.8	71.3	5.5	5.2	2.9	5.2	1.2	4.9	1.0	74.1	5.5	20.4	0.084	0.539	20.803016	-89.044929
X. C. Kantunil - Izamal	68.00	3	1	3402	3.2	67.2	5.6	4.5	5.9	6.1	1.7	4.7	1.1	70.4	5.6	24.0	0.071	0.572	20.804632	-89.020461
X. C. Kantunil - Izamal	68.00	3	2	3011	2.8	68.1	5.5	4.3	5.5	5.8	1.6	5.1	1.3	70.9	5.5	23.6	0.085	0.572	20.804881	-89.020385
Plaza de Cobro Piste	115.34	1	1	2928	2.1	71.5	4.5	3.6	2.3	5.6	1.5	8.1	0.8	73.6	4.5	21.9	0.087	0.530	20.732628	-88.599203
Plaza de Cobro Piste	115.34	1	2	3075	2.4	70.7	4.8	3.7	1.9	5.6	1.6	8.3	1.0	73.1	4.8	22.1	0.082	0.530	20.732712	-88.599210
X. C. Valladolid - Río Lagartos	155.65	1	1	2867	2.7	68.3	4.8	4.2	5.6	5.1	1.4	6.8	1.1	71.0	4.8	24.2	0.095	0.502	20.745389	-88.251015
X. C. Valladolid - Río Lagartos	155.65	1	2	2881	2.5	68.6	4.6	3.7	5.7	5.3	1.5	6.9	1.2	71.1	4.6	24.3	0.102	0.502	20.745475	-88.250964
Estación Fitosanitaria X-Can	216.70	3	1	2819	2.7	64.6	6.3	6.7	5.6	5.2	2.1	5.9	0.9	67.3	6.3	26.4	0.095	0.646	20.880206	-87.596304
Estación Fitosanitaria X-Can	216.70	3	2	2758	2.7	65.0	6.3	6.6	5.6	5.0	2.1	5.9	0.8	67.7	6.3	26.0	0.074	0.646	20.880285	-87.596312
Lim. Edos. Term. Yuc. Ppia. Q. R.	219.80																			
X. C. El Cedral - Playa del Carmen	237.20	3	1	2217	6.5	65.0	5.3	4.7	7.4	4.2	0.4	5.6	0.9	71.5	5.3	23.2	0.105	0.588	20.923785	-87.368970
X. C. El Cedral - Playa del Carmen	237.20	3	2	2077	6.2	65.2	5.4	4.6	7.6	4.0	0.4	5.7	0.9	71.4	5.4	23.2	0.098	0.588	20.923868	-87.369010
T. C. Mérida - Puerto Juárez	292.00	1	1	3331	8.4	68.5	5.3	3.4	3.1	4.2	1.7	4.5	0.9	76.9	5.3	17.8	0.089	0.518	21.096178	-86.978256
T. C. Mérida - Puerto Juárez	292.00	1	2	3031	8.6	69.1	4.8	3.8	3.0	4.0	1.5	4.2	1.0	77.7	4.8	17.5	0.084	0.518	21.096452	-86.978346
T. Av. Huayacán	300.80	2	0	21653	6.9	77.9	3.7	4.3	3.2	1.7	0.6	1.4	0.3	84.8	3.7	11.5	0.072	0.788	21.053850	-86.910602
T. C. Reforma Agraria - Puerto Juárez	307.80	1	0	27029	4.9	85.2	1.9	3.7	1.5	1.1	0.4	1.0	0.3	90.1	1.9	8.0	0.079	0.733	21.021559	-86.860433

13 CARR: Bacalar - Miguel Alemán

CLAVE: 20030

RUTA: QR

AÑO: 2025

LUGAR	ESTACION				CLASIFICACION VEHICULAR EN PORCIENTO										COORDENADAS					
	KM	TE	SC	TDPA	M	A	B	C2	C3	T3S2	T3S3	T3S2R4	OTROS	A	B	C	K'	D	LATITUD	LONGITUD
T. C. (Reforma Agraria - Puerto Juárez)	0.00																			
Reforma	21.00	3	0	1084	30.5	66.4	0.4	1.5	0.6	0.2	0.3	0.1	0.0	96.9	0.4	2.7	0.100	0.713	18.813131	-88.580977
Altos de Sevilla	31.00	1	0	810	22.4	72.9	0.6	1.8	1.4	0.4	0.3	0.2	0.0	95.3	0.6	4.1	0.099	0.525	18.848257	-88.674270
Altos de Sevilla	31.00	3	0	558	24.1	72.5	0.6	1.2	0.5	0.7	0.2	0.2	0.0	96.6	0.6	2.8	0.090	0.600	18.854988	-88.677574
Miguel Alemán	110.00																			

14 CARR: Cancún - Punta Cancún

CLAVE: 23581

RUTA: QR

AÑO: 2025

LUGAR	ESTACION				CLASIFICACION VEHICULAR EN PORCIENTO										COORDENADAS					
	KM	TE	SC	TDPA	M	A	B	C2	C3	T3S2	T3S3	T3S2R4	OTROS	A	B	C	K'	D	LATITUD	LONGITUD
Cancún	0.00	3	1	31235	7.7	83.9	0.7	6.5	0.5	0.2	0.1	0.3	0.1	91.6	0.7	7.7	0.090	0.563	21.158115	-86.810414
Cancún	0.00	3	2	29759	7.4	84.9	0.5	6.3	0.3	0.1	0.2	0.2	0.1	92.3	0.5	7.2	0.071	0.563	21.158181	-86.810585
T. Der. Colibrí	7.00	1	1	23970	3.3	87.7	1.0	7.0	0.3	0.2	0.1	0.3	0.1	91.0	1.0	8.0	0.099	0.516	21.136369	-86.765735

QUINTANA ROO

14 CARR: Cancún - Punta Cancún

CLAVE: 23581

RUTA: QR

AÑO: 2025

LUGAR	ESTACION				CLASIFICACION VEHICULAR EN PORCIENTO										COORDENADAS					
	KM	TE	SC	TDPA	M	A	B	C2	C3	T3S2	T3S3	T3S2R4	OTROS	A	B	C	K'	D	LATITUD	LONGITUD
T. Der. Colibrí	7.00	1	2	24011	3.0	88.0	0.8	7.2	0.4	0.2	0.1	0.2	0.1	91.0	0.8	8.2	0.077	0.516	21.136479	-86.765704
Punta Cancún	8.00	1	1	26245	3.9	86.8	0.9	7.4	0.3	0.2	0.1	0.3	0.1	90.7	0.9	8.4	0.086	0.517	21.134666	-86.756341
Punta Cancún	8.00	1	2	26853	4.2	86.8	0.7	7.2	0.5	0.1	0.1	0.2	0.2	91.0	0.7	8.3	0.071	0.517	21.134782	-86.756242

15 CARR: Central Vallarta - Leona Vicario

CLAVE:

RUTA: QR

AÑO: 2025

LUGAR	ESTACION				CLASIFICACION VEHICULAR EN PORCIENTO										COORDENADAS					
	KM	TE	SC	TDPA	M	A	B	C2	C3	T3S2	T3S3	T3S2R4	OTROS	A	B	C	K'	D	LATITUD	LONGITUD
Puerto Morelos	0.00	3	0	4403	10.0	80.1	2.0	4.7	2.1	0.5	0.4	0.1	0.1	90.1	2.0	7.9	0.088	0.537	20.847945	-86.904717
T Izq. Kin - Ha	19.17	3	0	2000	12.2	77.9	2.6	4.6	1.8	0.5	0.1	0.2	0.1	90.1	2.6	7.3	0.097	0.804	20.877892	-87.081346
Leona Vicario	37.60																			

16 CARR: Chetumal - Calderitas

CLAVE: 23004

RUTA: QR-004

AÑO: 2025

LUGAR	ESTACION				CLASIFICACION VEHICULAR EN PORCIENTO										COORDENADAS					
	KM	TE	SC	TDPA	M	A	B	C2	C3	T3S2	T3S3	T3S2R4	OTROS	A	B	C	K'	D	LATITUD	LONGITUD
Chetumal	0.00	3	1	14480	20.2	76.1	0.2	2.5	0.3	0.3	0.1	0.2	0.1	96.3	0.2	3.5	0.068	0.501	18.533553	-88.277710
Chetumal	0.00	3	2	16548	20.2	76.1	0.2	2.5	0.3	0.3	0.1	0.2	0.1	96.3	0.2	3.5	0.076	0.501	18.533599	-88.277780
Calderitas	9.00	1	1	2861	8.8	87.9	0.2	2.8	0.2	0.1	0.0	0.0	0.0	96.7	0.2	3.1	0.121	0.596	18.553703	-88.258363
Calderitas	9.00	1	2	2607	8.9	88.1	0.2	2.4	0.3	0.1	0.0	0.0	0.0	97.0	0.2	2.8	0.127	0.596	18.553795	-88.258268

17 CARR: El Ideal - Chiquila

CLAVE: 23005

RUTA: QR-005

AÑO: 2025

LUGAR	ESTACION				CLASIFICACION VEHICULAR EN PORCIENTO										COORDENADAS					
	KM	TE	SC	TDPA	M	A	B	C2	C3	T3S2	T3S3	T3S2R4	OTROS	A	B	C	K'	D	LATITUD	LONGITUD
T. C. Mérida - Puerto Juárez	0.00	3	0	1310	7.1	85.1	1.5	3.4	1.6	0.9	0.2	0.1	0.1	92.2	1.5	6.3	0.101	0.576	20.891028	-87.546385
Kantunilkin	31.20	1	0	3645	7.8	85.9	1.6	2.3	1.6	0.4	0.3	0.1	0.0	93.7	1.6	4.7	0.075	0.629	21.077395	-87.489381
Kantunilkin	31.20	3	0	3736	20.1	74.5	1.0	2.4	1.6	0.2	0.1	0.1	0.0	94.6	1.0	4.4	0.110	0.541	21.117125	-87.484603
Chiquila	75.60	1	0	2844	16.7	76.2	1.8	3.0	1.4	0.3	0.2	0.4	0.0	92.9	1.8	5.3	0.073	0.541	21.418975	-87.337566

18 CARR: Libramiento de Chetumal

CLAVE: 23130

RUTA: QR

AÑO: 2025

LUGAR	ESTACION				CLASIFICACION VEHICULAR EN PORCIENTO										COORDENADAS					
	KM	TE	SC	TDPA	M	A	B	C2	C3	T3S2	T3S3	T3S2R4	OTROS	A	B	C	K'	D	LATITUD	LONGITUD
T. C. Francisco Escárcega - Chetumal	0.00	3	1	12347	12.3	83.1	1.1	1.4	0.9	0.5	0.2	0.3	0.2	95.4	1.1	3.5	0.084	0.512	18.517445	-88.344622

QUINTANA ROO

18 CARR: Libramiento de Chetumal

CLAVE: 23130

RUTA: QR

AÑO: 2025

LUGAR	ESTACION				CLASIFICACION VEHICULAR EN PORCIENTO													COORDENADAS		
	KM	TE	SC	TDPA	M	A	B	C2	C3	T3S2	T3S3	T3S2R4	OTROS	A	B	C	K'	D	LATITUD	LONGITUD
T. C. Francisco Escárcega - Chetumal	0.00	3	2	12244	12.4	83.2	1.1	1.5	0.7	0.5	0.1	0.4	0.1	95.6	1.1	3.3	0.088	0.512	18.517610	-88.344548
T. C. Chetumal - Calderitas	5.00																			

19 CARR: Perimetral Cozumel

CLAVE: 00148

RUTA: QR

AÑO: 2025

LUGAR	ESTACION				CLASIFICACION VEHICULAR EN PORCIENTO													COORDENADAS		
	KM	TE	SC	TDPA	M	A	B	C2	C3	T3S2	T3S3	T3S2R4	OTROS	A	B	C	K'	D	LATITUD	LONGITUD
Cozumel	0.00	3	0	14297	31.1	65.1	0.7	2.0	0.5	0.2	0.1	0.2	0.1	96.2	0.7	3.1	0.118	0.547	20.461140	-86.980546
El Cedral	13.40	1	1	1940	32.6	61.9	0.6	2.8	0.9	0.3	0.2	0.5	0.2	94.5	0.6	4.9	0.112	0.610	20.385271	-87.018419
El Cedral	13.40	1	2	2194	31.4	63.3	0.4	2.6	1.1	0.3	0.2	0.5	0.2	94.7	0.4	4.9	0.145	0.610	20.385258	-87.018373
El Cedral	13.40	3	1	358	20.1	75.0	1.1	2.1	0.5	0.4	0.3	0.4	0.1	95.1	1.1	3.8	0.154	0.700	20.362961	-87.018062
El Cedral	13.40	3	2	388	20.8	74.0	1.3	2.1	0.6	0.4	0.2	0.5	0.1	94.8	1.3	3.9	0.162	0.700	20.362961	-87.018022
Celarain	25.00	1	0	848	22.6	72.3	0.6	2.3	0.8	0.4	0.1	0.8	0.1	94.9	0.6	4.5	0.199	0.562	20.294386	-86.965919

20 CARR: Punta Nizuc - Cancún

CLAVE: 23014

RUTA: QR

AÑO: 2025

LUGAR	ESTACION				CLASIFICACION VEHICULAR EN PORCIENTO													COORDENADAS		
	KM	TE	SC	TDPA	M	A	B	C2	C3	T3S2	T3S3	T3S2R4	OTROS	A	B	C	K'	D	LATITUD	LONGITUD
Punta Nizuc	0.00	3	1	15412	2.8	84.4	1.2	9.8	0.8	0.4	0.3	0.1	0.2	87.2	1.2	11.6	0.079	0.547	21.047218	-86.783223
Punta Nizuc	0.00	3	2	14820	2.5	84.4	1.1	10.0	0.5	0.6	0.6	0.2	0.1	86.9	1.1	12.0	0.069	0.547	21.047391	-86.783376
Punta Cancún	12.40																			

21 CARR: Ramal a Aeropuerto Cancún

CLAVE: 23574

RUTA: QR

AÑO: 2025

LUGAR	ESTACION				CLASIFICACION VEHICULAR EN PORCIENTO													COORDENADAS		
	KM	TE	SC	TDPA	M	A	B	C2	C3	T3S2	T3S3	T3S2R4	OTROS	A	B	C	K'	D	LATITUD	LONGITUD
T. C. Reforma Agraria - Puerto Juárez	0.00	3	1	27269	1.8	88.3	2.1	6.6	0.5	0.1	0.3	0.1	0.2	90.1	2.1	7.8	0.078	0.507	21.038846	-86.862524
T. C. Reforma Agraria - Puerto Juárez	0.00	3	2	28012	2.0	88.7	1.7	6.4	0.4	0.1	0.4	0.2	0.1	90.7	1.7	7.6	0.076	0.507	21.038776	-86.862574
Aeropuerto Cancún	2.00	1	1	32182	1.9	89.8	1.4	5.3	0.5	0.4	0.3	0.2	0.2	91.7	1.4	6.9	0.081	0.516	21.041633	-86.866986
Aeropuerto Cancún	2.00	1	2	32092	2.0	89.4	1.7	5.6	0.3	0.3	0.2	0.3	0.2	91.4	1.7	6.9	0.082	0.516	21.041340	-86.866685

QUINTANA ROO

22 CARR: Ramal a Candelaria

CLAVE: 23027

RUTA: QR

AÑO: 2025

LUGAR	ESTACION				CLASIFICACION VEHICULAR EN PORCIENTO														COORDENADAS	
	KM	TE	SC	TDPA	M	A	B	C2	C3	T3S2	T3S3	T3S2R4	OTROS	A	B	C	K'	D	LATITUD	LONGITUD
T. C. Muna - Felipe Carrillo Puerto	0.00	3	0	1750	33.3	63.7	0.6	0.9	1.1	0.2	0.1	0.1	0.0	97.0	0.6	2.4	0.088	0.519	19.806707	-88.757743
Candelaria	15.30																			

23 CARR: Ramal a El Naranjal

CLAVE: 23579

RUTA: QR

AÑO: 2025

LUGAR	ESTACION				CLASIFICACION VEHICULAR EN PORCIENTO														COORDENADAS	
	KM	TE	SC	TDPA	M	A	B	C2	C3	T3S2	T3S3	T3S2R4	OTROS	A	B	C	K'	D	LATITUD	LONGITUD
José María Morelos	0.00	3	0	1568	44.1	50.1	0.9	1.3	1.6	0.8	0.3	0.9	0.0	94.2	0.9	4.9	0.085	0.519	19.734621	-88.717001
El Naranjal	16.00																			

24 CARR: Ramal a Laguna de Kaná

CLAVE: 23213

RUTA: QR

AÑO: 2025

LUGAR	ESTACION				CLASIFICACION VEHICULAR EN PORCIENTO														COORDENADAS	
	KM	TE	SC	TDPA	M	A	B	C2	C3	T3S2	T3S3	T3S2R4	OTROS	A	B	C	K'	D	LATITUD	LONGITUD
T. C. Muna - Felipe Carrillo Puerto	0.00	3	0	477	22.8	73.5	0.9	1.6	1.2	0.0	0.0	0.0	0.0	96.3	0.9	2.8	0.117	0.518	19.642911	-88.411659
Laguna de Kaná	12.20																			

25 CARR: Ramal a Mahahual

CLAVE: 23583

RUTA: QR

AÑO: 2025

LUGAR	ESTACION				CLASIFICACION VEHICULAR EN PORCIENTO														COORDENADAS	
	KM	TE	SC	TDPA	M	A	B	C2	C3	T3S2	T3S3	T3S2R4	OTROS	A	B	C	K'	D	LATITUD	LONGITUD
T. C. Reforma Agraria - Puerto Juárez	0.00	3	0	1815	8.2	84.0	2.7	3.5	0.9	0.4	0.1	0.2	0.0	92.2	2.7	5.1	0.082	0.577	18.980099	-88.110502
Mahahual	60.09																			

26 CARR: Ramal a Petcacab

CLAVE: 23018

RUTA: QR-018

AÑO: 2025

LUGAR	ESTACION				CLASIFICACION VEHICULAR EN PORCIENTO														COORDENADAS	
	KM	TE	SC	TDPA	M	A	B	C2	C3	T3S2	T3S3	T3S2R4	OTROS	A	B	C	K'	D	LATITUD	LONGITUD
T. C. Reforma Agraria - Puerto Juárez	0.00	3	0	1324	19.1	61.2	0.6	3.9	5.9	7.2	0.6	1.2	0.3	80.3	0.6	19.1	0.125	0.515	19.135351	-88.106133
Petcacab	37.00																			

QUINTANA ROO

27 CARR: Ramal a Punta Allen

CLAVE: 23015

RUTA: QR-015

AÑO: 2025

LUGAR	ESTACION				CLASIFICACION VEHICULAR EN PORCIENTO													COORDENADAS		
	KM	TE	SC	TDPA	M	A	B	C2	C3	T3S2	T3S3	T3S2R4	OTROS	A	B	C	K'	D	LATITUD	LONGITUD
T. C. Reforma Agraria - Puerto Juárez	0.00	3	0	15689	12.9	80.2	0.7	3.8	0.8	0.3	0.5	0.6	0.2	93.1	0.7	6.2	0.068	0.513	20.205436	-87.450155
Beh-Ha	10.20	1	0	999	11.5	82.3	0.6	1.2	2.2	1.4	0.1	0.7	0.0	93.8	0.6	5.6	0.104	0.510	20.129009	-87.465434
Punta Allen	57.00																			

28 CARR: Ramal a Punta Sam

CLAVE: 23582

RUTA: QR

AÑO: 2025

LUGAR	ESTACION				CLASIFICACION VEHICULAR EN PORCIENTO													COORDENADAS		
	KM	TE	SC	TDPA	M	A	B	C2	C3	T3S2	T3S3	T3S2R4	OTROS	A	B	C	K'	D	LATITUD	LONGITUD
Puerto Juárez	0.00	3	0	7430	8.9	85.7	0.7	2.4	1.0	0.6	0.1	0.5	0.1	94.6	0.7	4.7	0.075	0.583	21.192971	-86.806296
Punta Sam	5.00	1	0	2503	9.4	85.1	0.8	2.6	0.5	0.3	1.0	0.2	0.1	94.5	0.8	4.7	0.079	0.711	21.217204	-86.802364

29 CARR: Ramal a Reforma

CLAVE: 23016

RUTA: QR-016

AÑO: 2025

LUGAR	ESTACION				CLASIFICACION VEHICULAR EN PORCIENTO													COORDENADAS		
	KM	TE	SC	TDPA	M	A	B	C2	C3	T3S2	T3S3	T3S2R4	OTROS	A	B	C	K'	D	LATITUD	LONGITUD
T. C. Reforma Agraria - Puerto Juárez	0.00	3	0	2961	22.3	71.7	0.3	4.2	1.0	0.3	0.1	0.1	0.0	94.0	0.3	5.7	0.082	0.560	18.705375	-88.388522
Reforma	44.00																			

30 CARR: Ramal a Tres Garantías

CLAVE: 23585

RUTA: QR

AÑO: 2025

LUGAR	ESTACION				CLASIFICACION VEHICULAR EN PORCIENTO													COORDENADAS		
	KM	TE	SC	TDPA	M	A	B	C2	C3	T3S2	T3S3	T3S2R4	OTROS	A	B	C	K'	D	LATITUD	LONGITUD
T. C. Francisco Escárcega - Chetumal	0.00	3	0	234	19.1	76.8	1.0	0.4	0.9	0.8	0.6	0.3	0.1	95.9	1.0	3.1	0.115	0.556	18.454898	-89.001071
Tres Garantías	30.00																			

31 CARR: Tihosuco - Dziuche

CLAVE: 23576

RUTA: QR

AÑO: 2025

LUGAR	ESTACION				CLASIFICACION VEHICULAR EN PORCIENTO													COORDENADAS		
	KM	TE	SC	TDPA	M	A	B	C2	C3	T3S2	T3S3	T3S2R4	OTROS	A	B	C	K'	D	LATITUD	LONGITUD
T. C. Valladolid - Felipe Carrillo Puerto	0.00	3	0	657	17.3	79.1	1.0	1.3	1.0	0.2	0.0	0.1	0.0	96.4	1.0	2.6	0.107	0.529	20.176703	-88.397462
Dziuche	60.50	1	0	1366	37.9	58.1	1.0	1.3	0.6	0.3	0.3	0.4	0.1	96.0	1.0	3.0	0.095	0.631	19.912638	-88.808209

QUINTANA ROO

32 CARR: Transversal de Cozumel

CLAVE: 23577

RUTA: QR

AÑO: 2025

LUGAR	ESTACION				CLASIFICACION VEHICULAR EN PORCIENTO													COORDENADAS		
	KM	TE	SC	TDPA	M	A	B	C2	C3	T3S2	T3S3	T3S2R4	OTROS	A	B	C	K'	D	LATITUD	LONGITUD
Cozumel	0.00	3	1	3093	49.3	48.6	0.4	0.9	0.5	0.1	0.1	0.1	0.0	97.9	0.4	1.7	0.084	0.556	20.480612	-86.912281
Cozumel	0.00	3	2	3121	49.5	48.0	0.3	1.2	0.6	0.1	0.2	0.1	0.0	97.5	0.3	2.2	0.076	0.556	20.480579	-86.912118
Mezcalitos	14.00																			

33 CARR: Tulum - Nuevo X-Can

CLAVE: 23570

RUTA: QR

AÑO: 2025

LUGAR	ESTACION				CLASIFICACION VEHICULAR EN PORCIENTO													COORDENADAS		
	KM	TE	SC	TDPA	M	A	B	C2	C3	T3S2	T3S3	T3S2R4	OTROS	A	B	C	K'	D	LATITUD	LONGITUD
T. C. Reforma Agraria - Puerto Juárez	0.00	3	1	7863	8.8	73.7	2.5	5.9	3.9	2.1	0.8	1.7	0.6	82.5	2.5	15.0	0.088	0.547	20.218400	-87.454828
T. C. Reforma Agraria - Puerto Juárez	0.00	3	2	8039	8.6	72.9	2.7	6.1	4.0	2.3	0.7	1.9	0.8	81.5	2.7	15.8	0.090	0.547	20.218374	-87.454897
T. Izq. Ruinas Cobá	42.95	1	0	6411	4.2	86.5	2.2	3.0	1.1	1.5	0.4	1.0	0.1	90.7	2.2	7.1	0.086	0.771	20.503772	-87.714615
T. Izq. Ruinas Cobá	42.95	3	0	714	15.1	82.8	0.4	0.7	0.4	0.3	0.1	0.1	0.1	97.9	0.4	1.7	0.099	0.648	20.509960	-87.717073
Lim. Edos. Term. Q. Roo. Ppia. Yuc.	49.42																			
Lim. Edos. Term. Yuc. Ppia. Q. Roo.	64.97																			
Nuevo X-Can	87.40	1	0	598	9.5	87.1	0.8	1.8	0.7	0.1	0.0	0.0	0.0	96.6	0.8	2.6	0.112	0.552	20.858662	-87.600867

34 CARR: Ucum - Unión

CLAVE: 23571

RUTA: QR

AÑO: 2025

LUGAR	ESTACION				CLASIFICACION VEHICULAR EN PORCIENTO													COORDENADAS		
	KM	TE	SC	TDPA	M	A	B	C2	C3	T3S2	T3S3	T3S2R4	OTROS	A	B	C	K'	D	LATITUD	LONGITUD
Ucum	0.00	3	0	5167	16.2	77.0	1.0	1.9	1.6	0.9	0.5	0.7	0.2	93.2	1.0	5.8	0.075	0.528	18.471293	-88.517554
T. Der. Ingenio Álvaro Obregón	31.00	1	0	1813	15.2	80.7	0.6	1.5	0.5	0.3	0.1	1.0	0.1	95.9	0.6	3.5	0.083	0.583	18.254240	-88.647992
T. Der. Ingenio Álvaro Obregón	31.00	3	0	2731	31.2	65.2	0.2	0.4	2.0	0.6	0.2	0.2	0.0	96.4	0.2	3.4	0.078	0.526	18.245430	-88.652358
T. Der. U. A. Galeras	75.00	1	0	281	30.6	64.8	0.3	0.6	1.5	1.3	0.7	0.2	0.0	95.4	0.3	4.3	0.114	0.563	17.990826	-88.846516
T. Der. U. A. Galeras	75.00	3	0	227	11.9	83.0	1.1	3.1	0.7	0.1	0.1	0.0	0.0	94.9	1.1	4.0	0.141	0.531	17.987787	-88.857485
Unión	88.00	1	0	851	21.4	76.1	0.6	1.2	0.4	0.1	0.1	0.1	0.0	97.5	0.6	1.9	0.083	0.620	17.909406	-88.880654

35 CARR: Chemax - Cobá

CLAVE:

RUTA: YUC-MEX-180

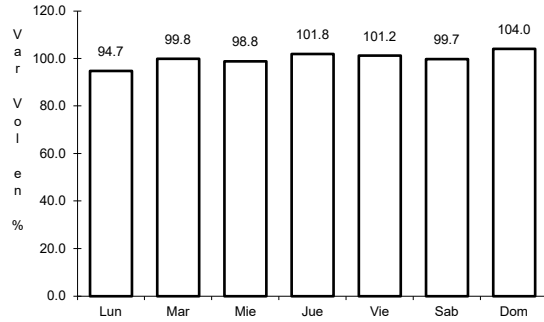
AÑO: 2025

LUGAR	ESTACION				CLASIFICACION VEHICULAR EN PORCIENTO													COORDENADAS		
	KM	TE	SC	TDPA	M	A	B	C2	C3	T3S2	T3S3	T3S2R4	OTROS	A	B	C	K'	D	LATITUD	LONGITUD
Chemax	0.00	3	0	5538	3.9	84.6	2.4	2.8	1.8	1.7	1.0	1.4	0.4	88.5	2.4	9.1	0.083	0.887	20.656666	-87.954419
Lim. Edos. Term. Yucatán Ppia. Q Roo.	25.00																			
Cobá	30.90	1	0	5348	4.1	85.4	2.5	2.6	1.5	1.7	0.8	1.3	0.1	89.5	2.5	8.0	0.082	0.716	20.509862	-87.722085

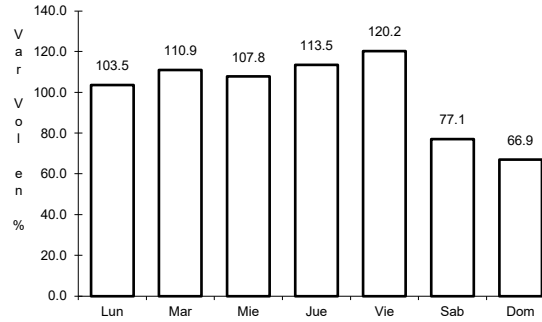
1 CARR: Francisco Escárcega - Chetumal

CLAVE: 00093

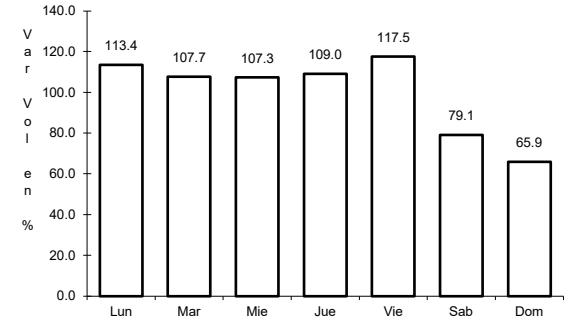
ruta: MEX-186-307



Km: 0.00 Tipo: 3 Sent: 0



Km: 277.36 Tipo: 1 Sent: 1

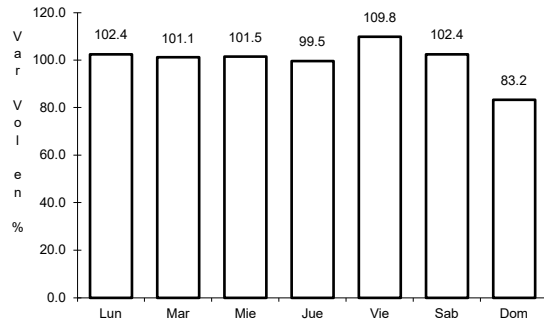


Km: 277.36 Tipo: 1 Sent: 2

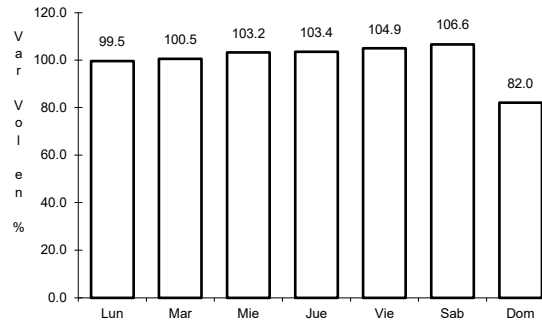
2 CARR: Mérida - Puerto Juárez

CLAVE: 00067

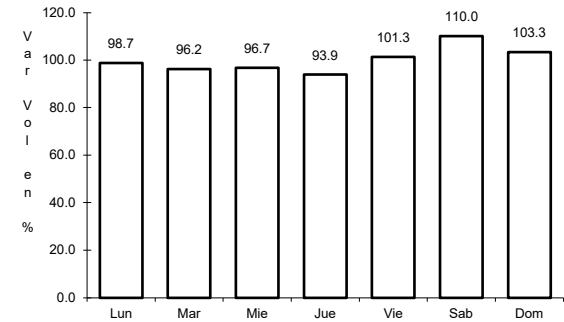
ruta: MEX-180



Km: 5.60 Tipo: 1 Sent: 1



Km: 5.60 Tipo: 1 Sent: 2

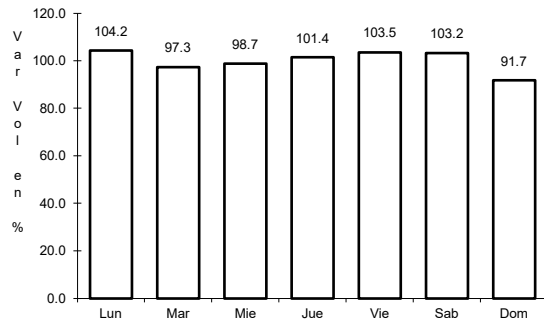


Km: 302.50 Tipo: 1 Sent: 0

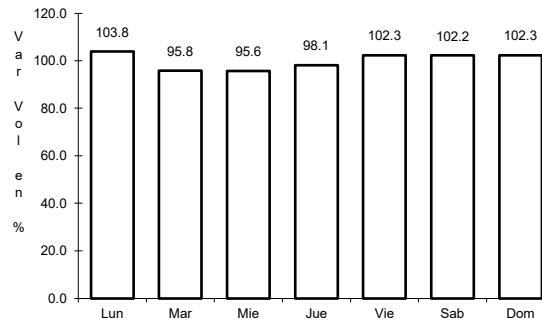
3 CARR: Muna - Felipe Carrillo Puerto

CLAVE: 00148

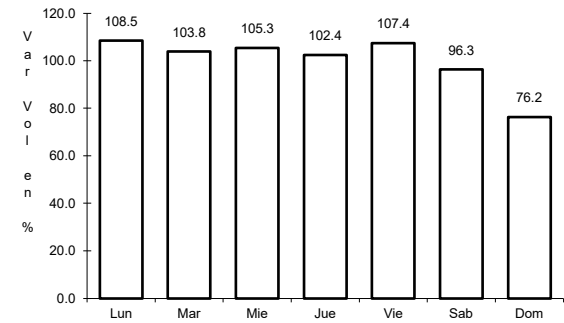
ruta: MEX-184



Km: 0.00 Tipo: 3 Sent: 0



Km: 109.60 Tipo: 3 Sent: 0

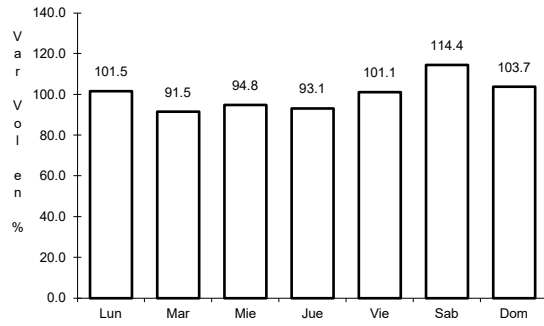


Km: 216.97 Tipo: 1 Sent: 0

4 CARR: Ramal a Puerto Morelos

CLAVE: 23569

ruta: MEX



Km: 0.00

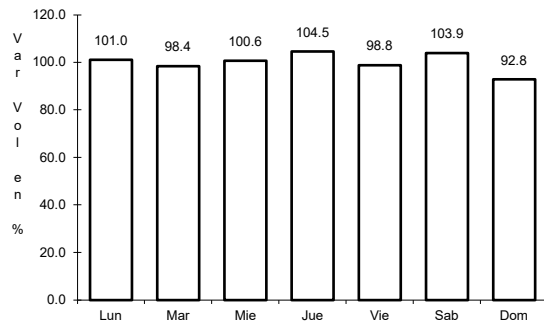
Tipo: 3

Sent: 0

5 CARR: Ramal a Punta Piedra

CLAVE: 23575

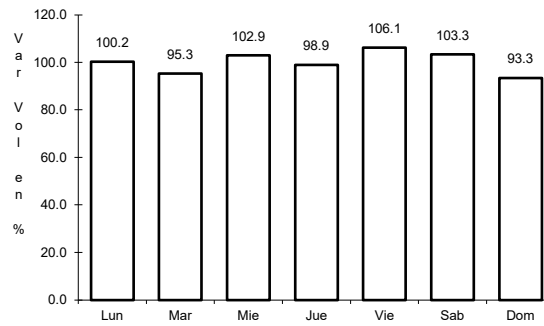
ruta: MEX



Km: 0.00

Tipo: 3

Sent: 1



Km: 0.00

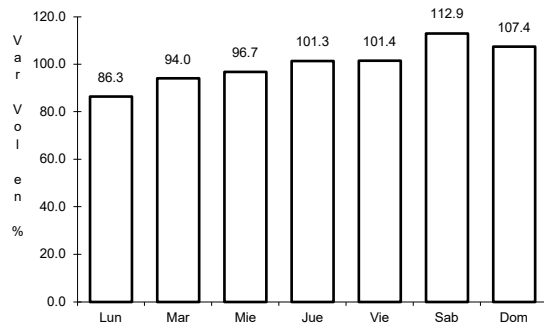
Tipo: 3

Sent: 2

6 CARR: Ramal a Subteniente López

CLAVE: 23567

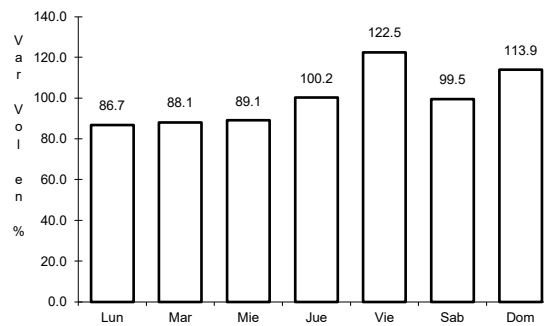
ruta: MEX-186



Km: 0.00

Tipo: 3

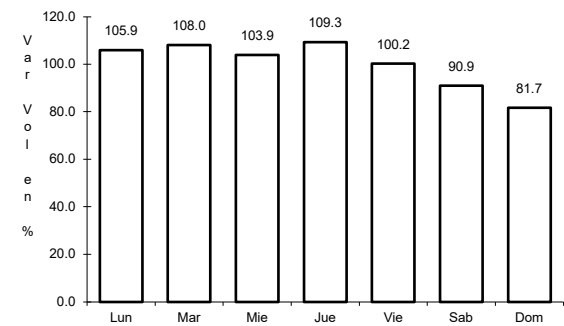
Sent: 1



Km: 0.00

Tipo: 3

Sent: 2



Km: 1.80

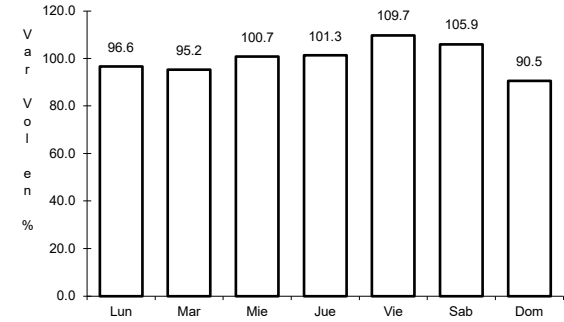
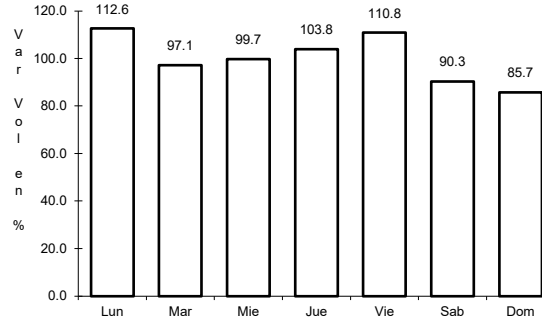
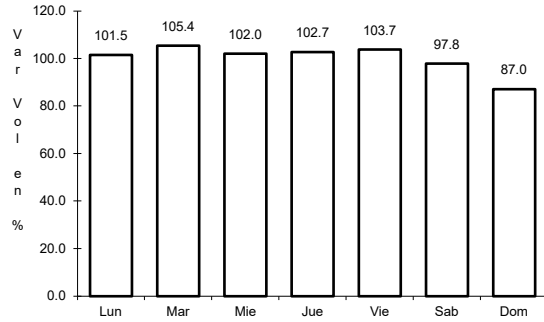
Tipo: 3

Sent: 1

7 CARR: Reforma Agraria - Puerto Juárez

CLAVE: 23132

ruta: MEX-307



Km: 0.00 Tipo: 3 Sent: 1

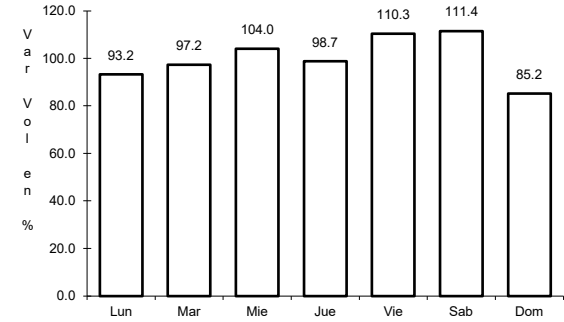
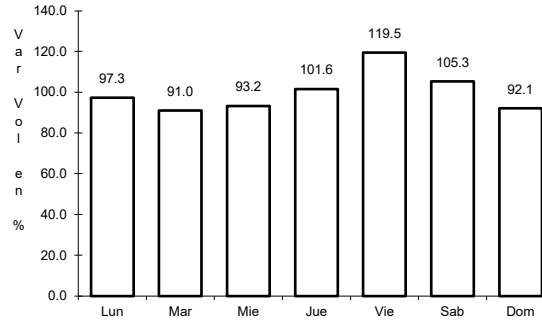
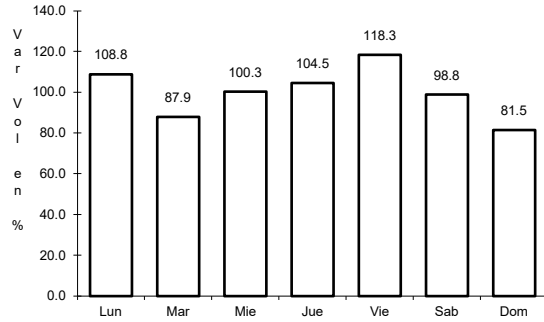
Km: 0.00 Tipo: 3 Sent: 2

Km: 227.00 Tipo: 1 Sent: 0

8 CARR: T. C. (Reforma Agraria - Puerto Juárez) - Polyuc

CLAVE: 23014

ruta: MEX-293



Km: 0.00 Tipo: 3 Sent: 0

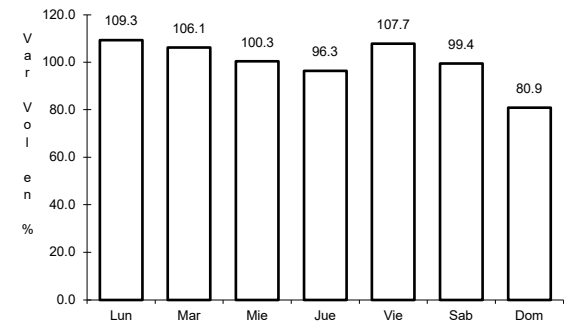
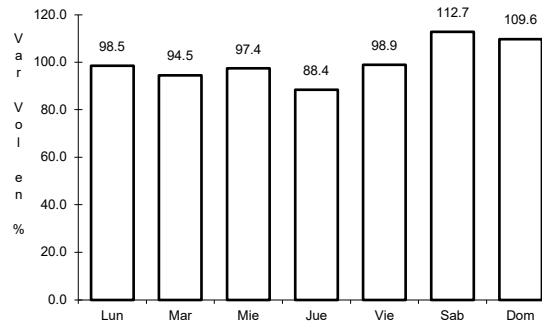
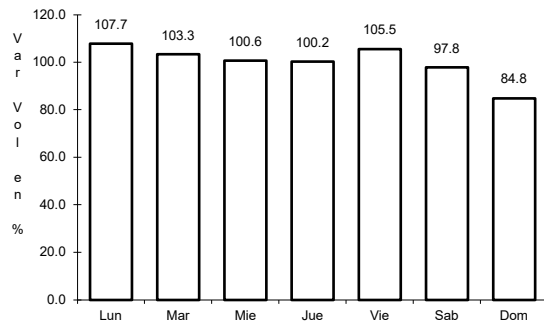
Km: 49.00 Tipo: 1 Sent: 0

Km: 100.00 Tipo: 1 Sent: 0

9 CARR: Valladolid - Felipe Carrillo Puerto

CLAVE: 00010

ruta: MEX-295



Km: 0.00 Tipo: 3 Sent: 0

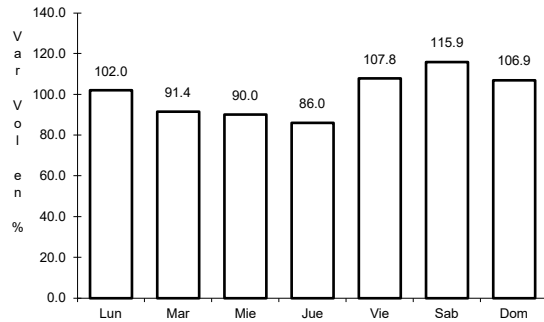
Km: 99.00 Tipo: 1 Sent: 0

Km: 147.70 Tipo: 1 Sent: 0

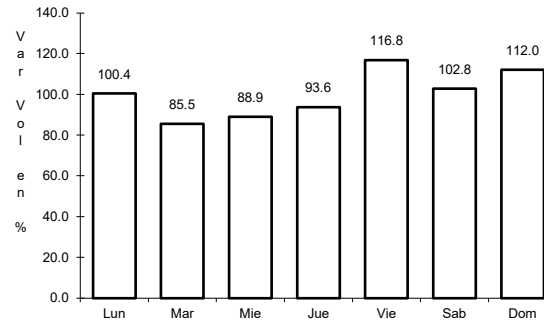
10 CARR: El Cedral - Playa del Carmen (Cuota)

CLAVE:

ruta: MEX-180D



Km: 10.05 Tipo: 1 Sent: 0

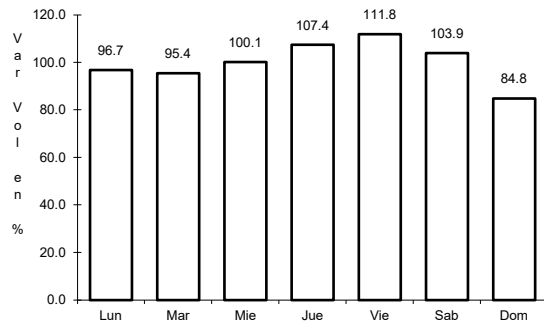


Km: 10.05 Tipo: 3 Sent: 0

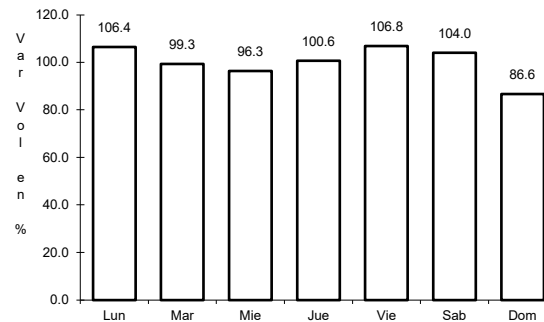
11 CARR: Libramiento de Felipe Carrillo Puerto (Cuota)

CLAVE:

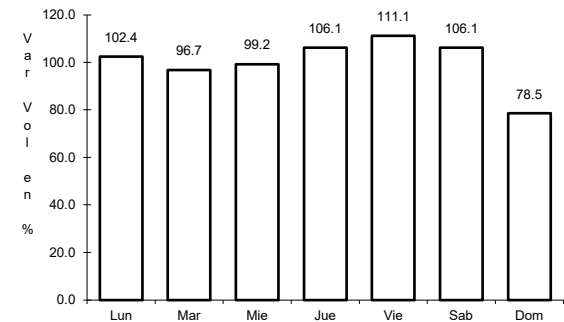
ruta: MEX-307D



Km: 0.00 Tipo: 3 Sent: 0



Km: 9.00 Tipo: 1 Sent: 0

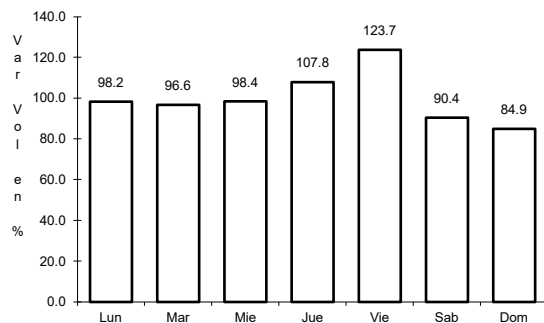


Km: 13.92 Tipo: 1 Sent: 0

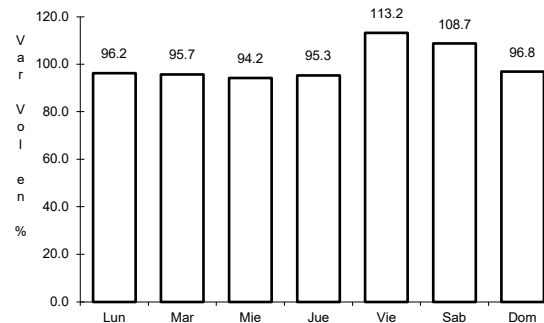
12 CARR: Mérida - Cancún (Cuota)

CLAVE: 00071

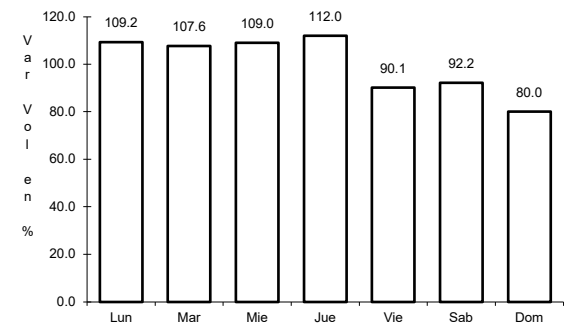
ruta: MEX-180D



Km: 115.34 Tipo: 1 Sent: 1



Km: 115.34 Tipo: 1 Sent: 2

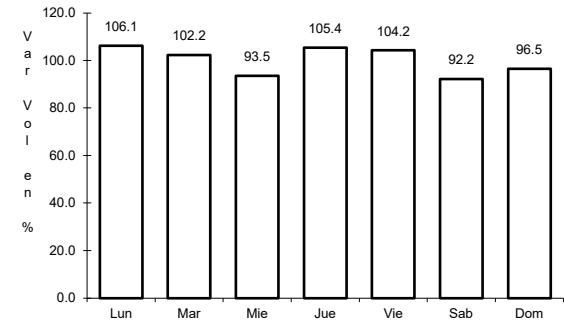
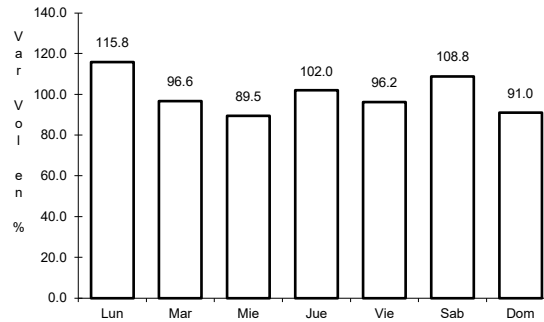
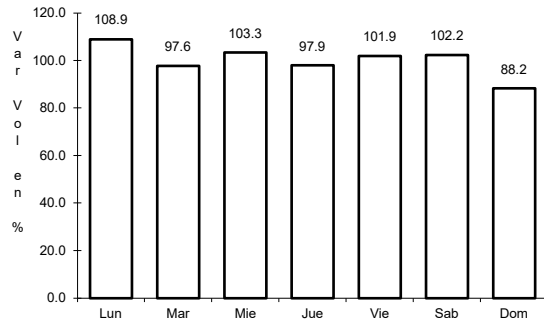


Km: 307.80 Tipo: 1 Sent: 0

13 CARR: Bacalar - Miguel Alemán

CLAVE: 20030

ruta: QR



Km: 21.00 Tipo: 3 Sent: 0

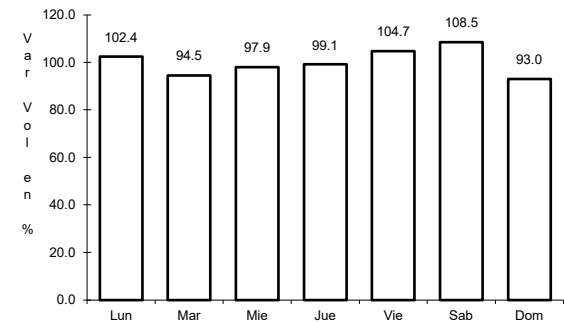
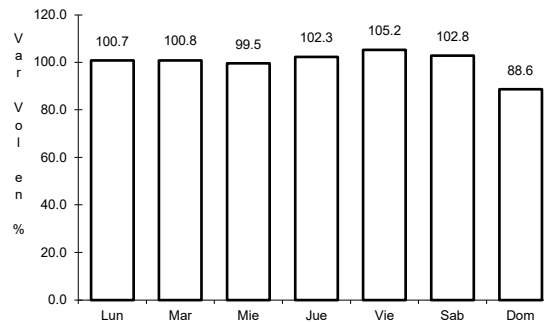
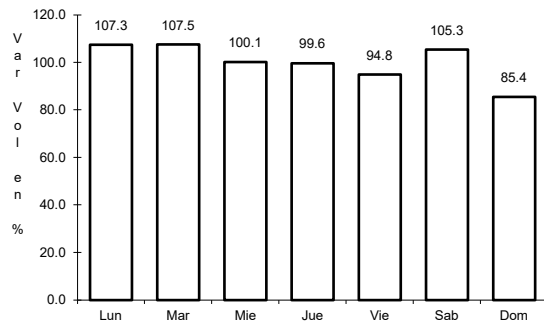
Km: 31.00 Tipo: 1 Sent: 0

Km: 31.00 Tipo: 3 Sent: 0

14 CARR: Cancún - Punta Cancún

CLAVE: 23581

ruta: QR



Km: 0.00 Tipo: 3 Sent: 1

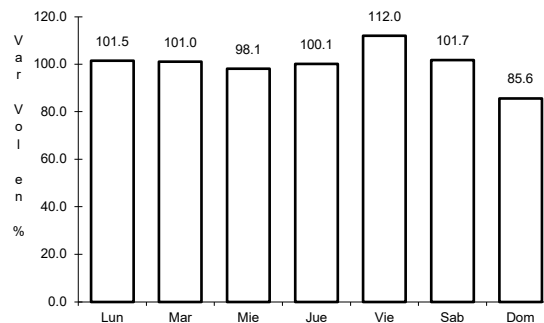
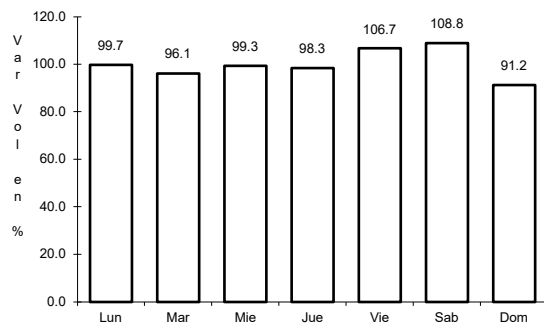
Km: 0.00 Tipo: 3 Sent: 2

Km: 8.00 Tipo: 1 Sent: 1

15 CARR: Central Vallarta - Leona Vicario

CLAVE:

ruta: QR



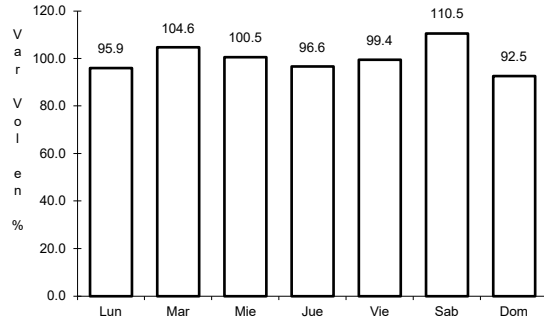
Km: 0.00 Tipo: 3 Sent: 0

Km: 19.17 Tipo: 3 Sent: 0

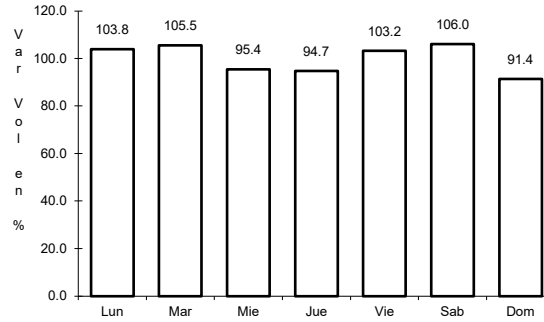
16 CARR: Chetumal - Calderitas

CLAVE: 23004

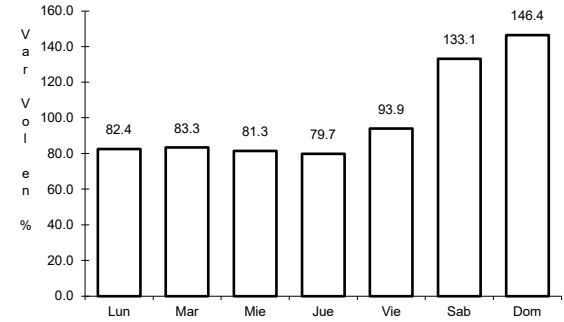
ruta: QR-004



Km: 0.00 Tipo: 3 Sent: 1



Km: 0.00 Tipo: 3 Sent: 2

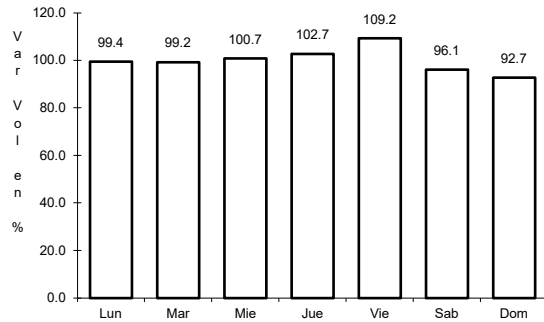


Km: 9.00 Tipo: 1 Sent: 1

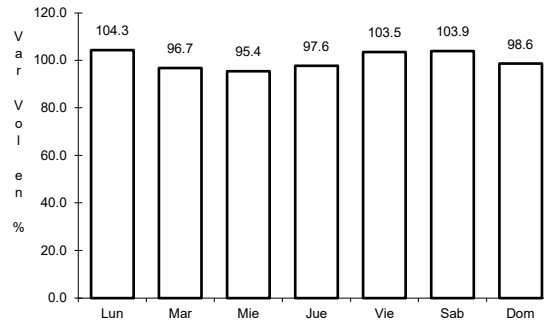
17 CARR: El Ideal - Chiquila

CLAVE: 23005

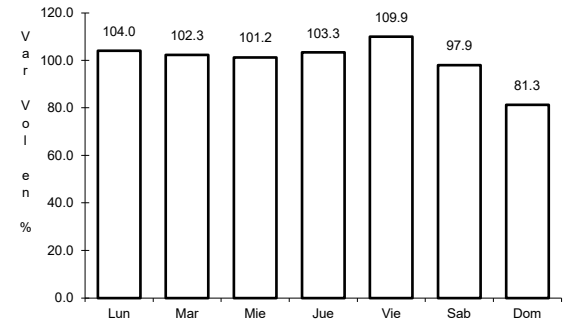
ruta: QR-005



Km: 0.00 Tipo: 3 Sent: 0



Km: 31.20 Tipo: 1 Sent: 0

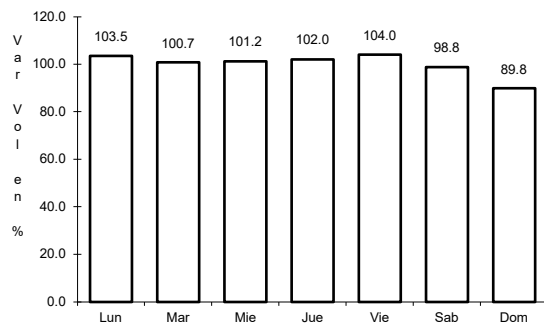


Km: 75.60 Tipo: 1 Sent: 0

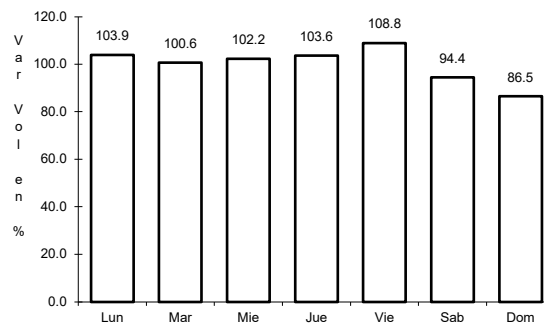
18 CARR: Libramiento de Chetumal

CLAVE: 23130

ruta: QR



Km: 0.00 Tipo: 3 Sent: 1

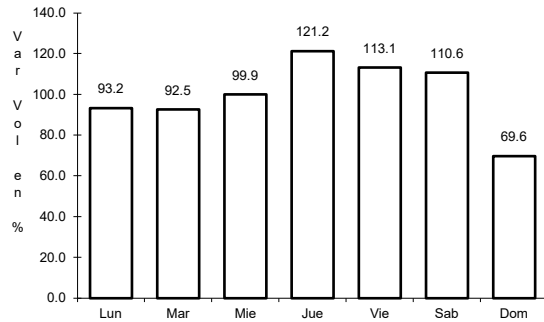


Km: 0.00 Tipo: 3 Sent: 2

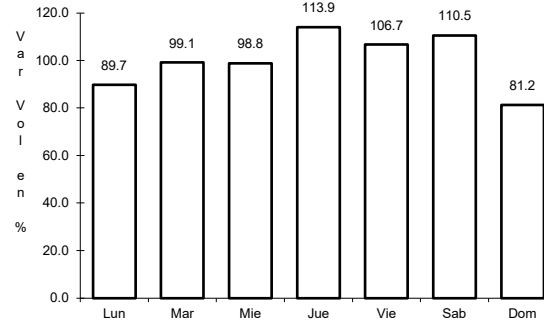
19 CARR: Perimetral Cozumel

CLAVE: 00148

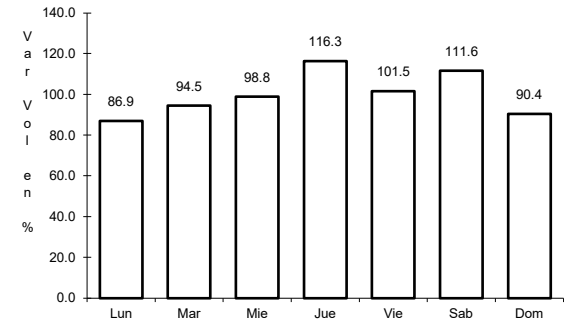
ruta: QR



Km: 0.00 Tipo: 3 Sent: 0



Km: 13.40 Tipo: 3 Sent: 1

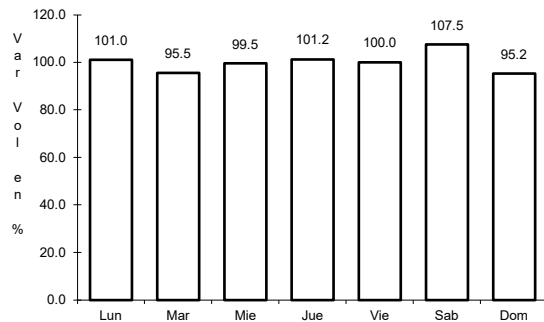


Km: 13.40 Tipo: 3 Sent: 2

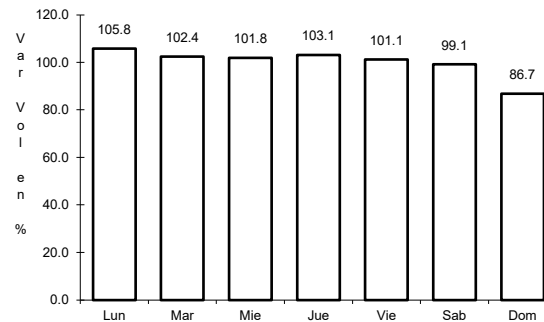
20 CARR: Punta Nizuc - Cancún

CLAVE: 23014

ruta: QR



Km: 0.00 Tipo: 3 Sent: 1

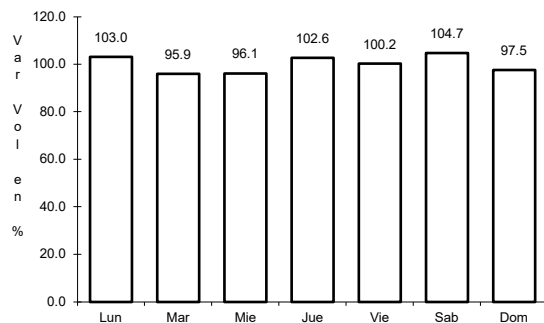


Km: 0.00 Tipo: 3 Sent: 2

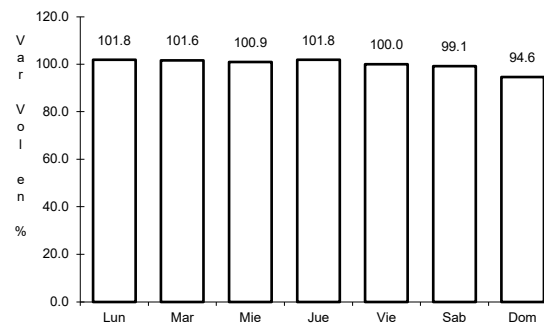
21 CARR: Ramal a Aeropuerto Cancún

CLAVE: 23574

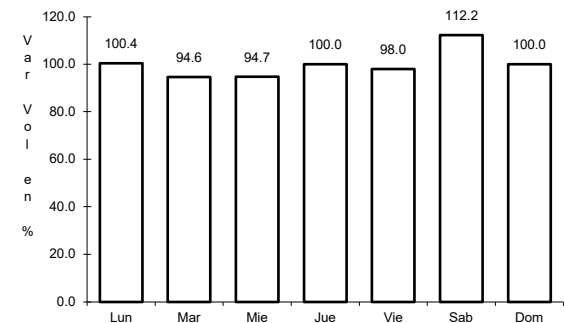
ruta: QR



Km: 0.00 Tipo: 3 Sent: 1



Km: 0.00 Tipo: 3 Sent: 2

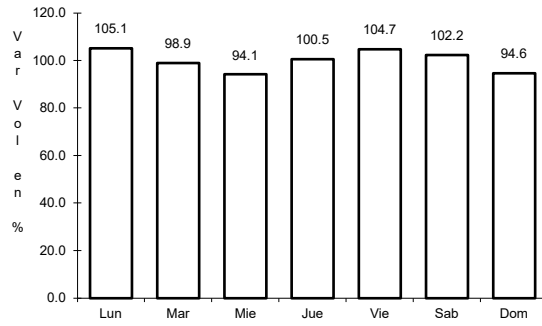


Km: 2.00 Tipo: 1 Sent: 1

22 CARR: Ramal a Candelaria

CLAVE: 23027

ruta: QR



Km: 0.00

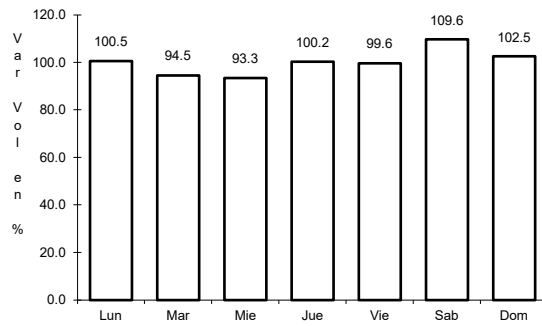
Tipo: 3

Sent: 0

23 CARR: Ramal a El Naranjal

CLAVE: 23579

ruta: QR



Km: 0.00

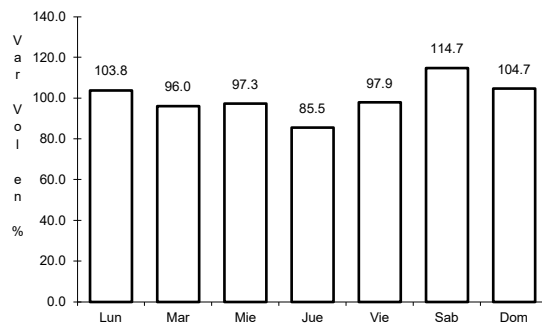
Tipo: 3

Sent: 0

24 CARR: Ramal a Laguna de Kaná

CLAVE: 23213

ruta: QR



Km: 0.00

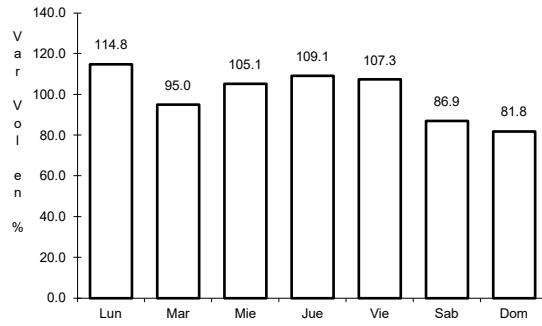
Tipo: 3

Sent: 0

25 CARR: Ramal a Mahahual

CLAVE: 23583

RUTA: QR



Km: 0.00

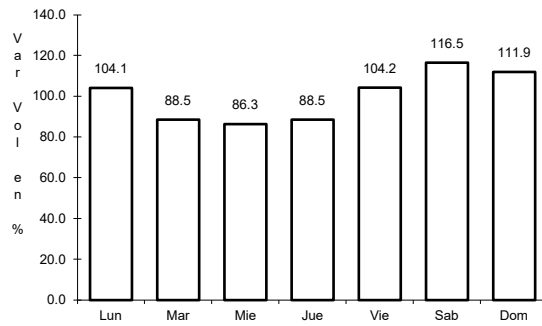
Tipo: 3

Sent: 0

26 CARR: Ramal a Petcacab

CLAVE: 23018

RUTA: QR-018



Km: 0.00

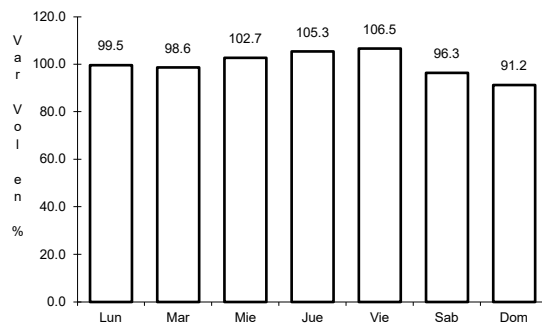
Tipo: 3

Sent: 0

27 CARR: Ramal a Punta Allen

CLAVE: 23015

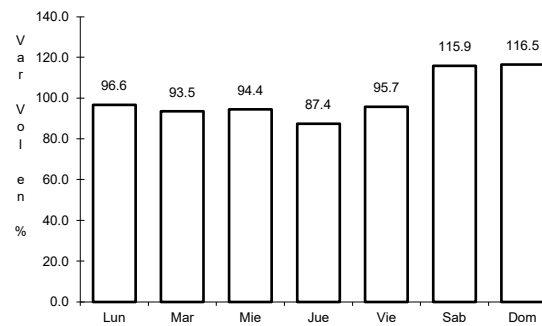
RUTA: QR-015



Km: 0.00

Tipo: 3

Sent: 0



Km: 10.20

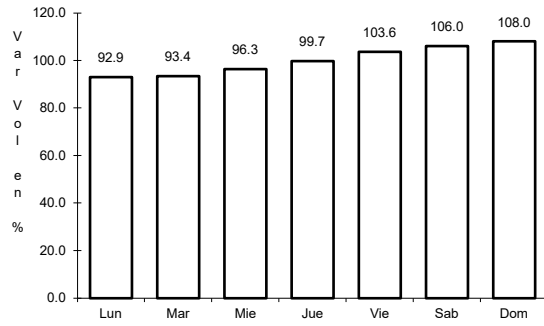
Tipo: 1

Sent: 0

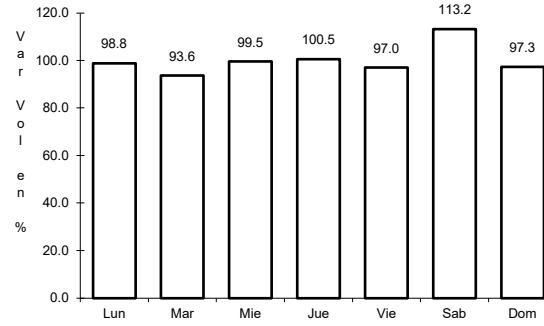
28 CARR: Ramal a Punta Sam

CLAVE: 23582

RUTA: QR



Km: 0.00 Tipo: 3 Sent: 0

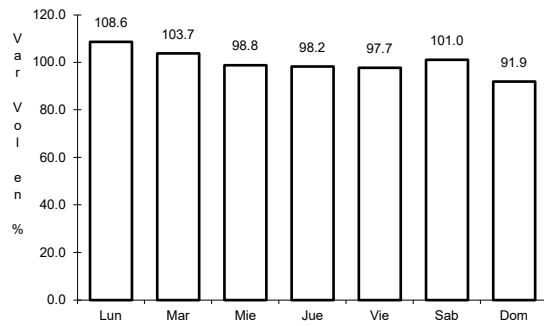


Km: 5.00 Tipo: 1 Sent: 0

29 CARR: Ramal a Reforma

CLAVE: 23016

RUTA: QR-016

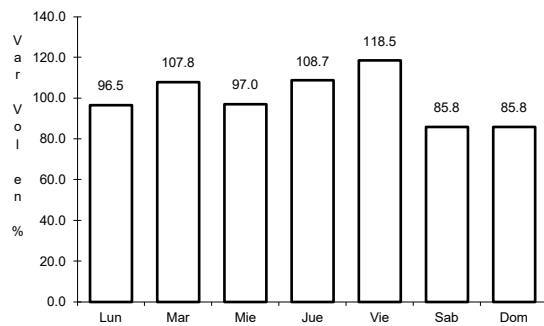


Km: 0.00 Tipo: 3 Sent: 0

30 CARR: Ramal a Tres Garantías

CLAVE: 23585

RUTA: QR

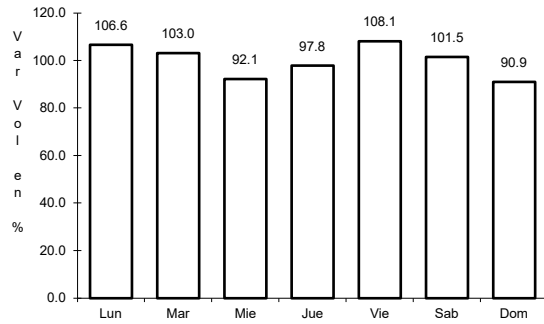


Km: 0.00 Tipo: 3 Sent: 0

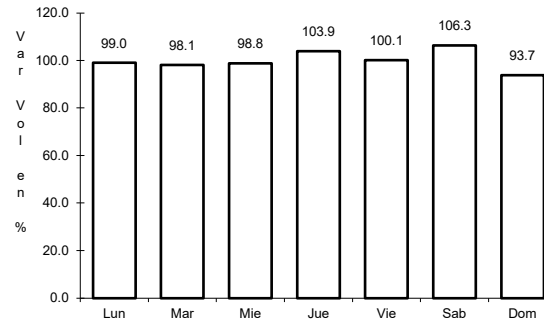
31 CARR: Tihosuco - Dziuche

CLAVE: 23576

ruta: QR



Km: 0.00 Tipo: 3 Sent: 0

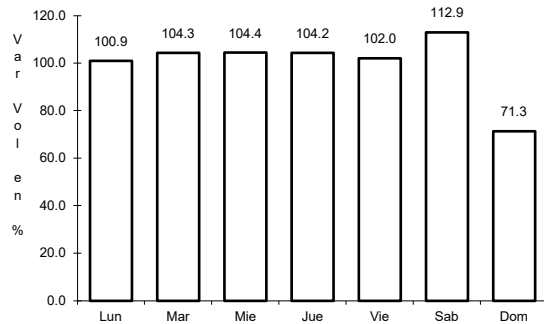


Km: 60.50 Tipo: 1 Sent: 0

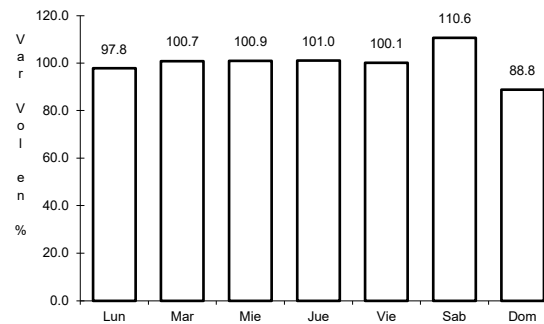
32 CARR: Transversal de Cozumel

CLAVE: 23577

ruta: QR



Km: 0.00 Tipo: 3 Sent: 1

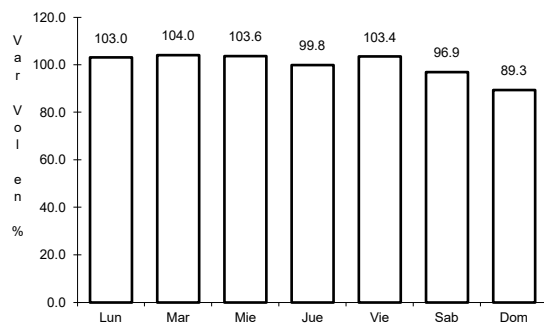


Km: 0.00 Tipo: 3 Sent: 2

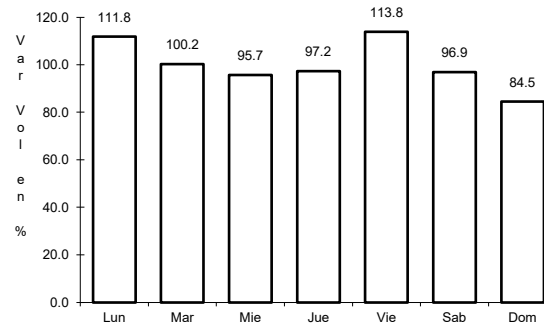
33 CARR: Tulum - Nuevo X-Can

CLAVE: 23570

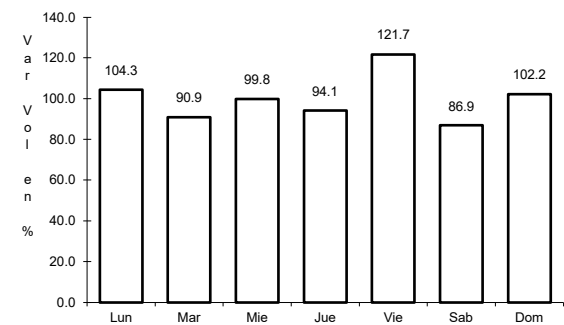
ruta: QR



Km: 0.00 Tipo: 3 Sent: 1



Km: 42.95 Tipo: 1 Sent: 0

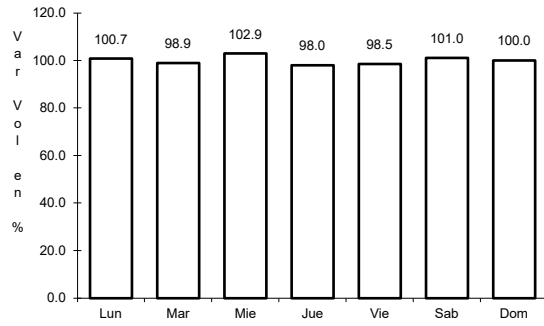


Km: 87.40 Tipo: 1 Sent: 0

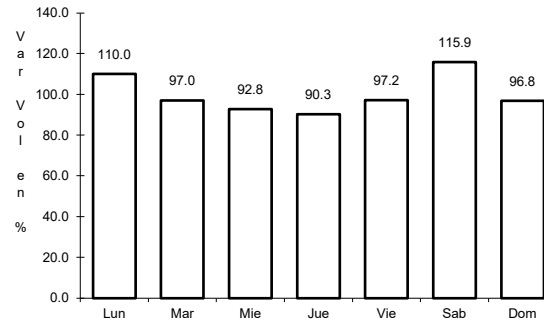
34 CARR: Ucum - Unión

CLAVE: 23571

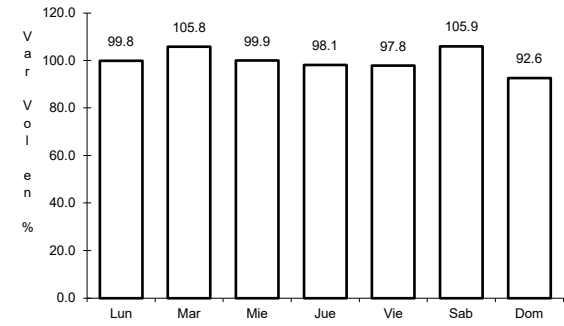
RUTA: QR



Km: 0.00 Tipo: 3 Sent: 0



Km: 31.00 Tipo: 3 Sent: 0

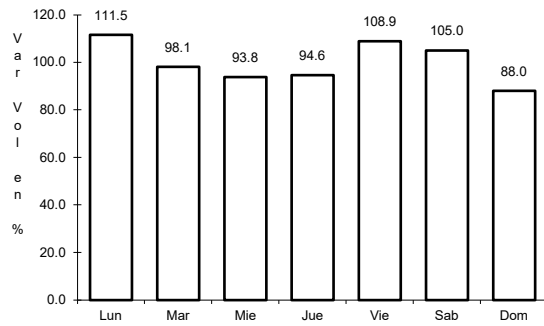


Km: 88.00 Tipo: 1 Sent: 0

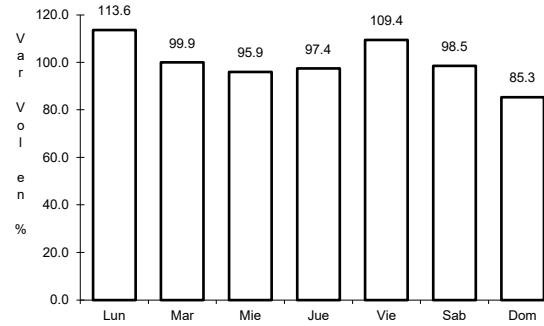
35 CARR: Chemax - Cobá

CLAVE:

RUTA: YUC-MEX-180



Km: 0.00 Tipo: 3 Sent: 0



Km: 30.90 Tipo: 1 Sent: 0